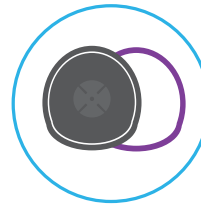




**Designed
to improve
your job**

W O R K F L O W

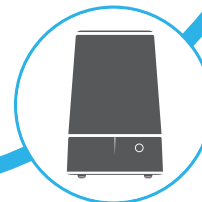
MODEL DEVELOPMENT



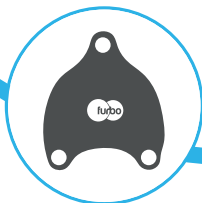
ARTICULATOR



DIGITAL
SCANNER



DIGITAL
3D PRINTER



FURBO FLASKS



HIGH QUALITY
MATERIALS



CERTIFIED
PROTOCOL



Index



REASONS WHY CHOOSING VERTYSYSTEM 04

I principali vantaggi per cui scegliere il nostro sistema di lavoro
Main reasons to choose our working system



MODEL DEVELOPMENT 06

Il WorkFlow di Vertysystem comincia qui: sviluppa il modello con Artic Pins o Vertys Split Cast
The WorkFlow of Vertysystem starts here: develop the Model with Artic Pins or Vertys Split Cast



ARTICULATOR 12

La messa in articolatore è una fase importante, fatti aiutare da Ar.go
Putting on articulator is a particular phase, let's get helped by Ar.go



FURBO & MATERIALS 16

Il cuore del nostro sistema è rappresentato dalle muffole Furbo e dai Materiali di Consumo, chiavi del successo di Vertysystem.
The heart of our system is represented by Furbo Flasks and Consumer Materials, they are the key of Vertysystem success



CODES 40

Tutti i codici del nostro sistema a tua disposizione, corredati di immagine illustrativa
All the codes of our system at your disposal, with their images



WHO WE ARE // SURPLUS // VQL 68

Le persone che ruotano attorno all'azienda e i nostri surplus
All the people around the company and our surplus

6 REASONS FOR CHOOSING VERTYSYSTEM RESINS



Minore residuo di monomero

Low residue monomer



Elevata lucidabilità grazie alle microsferi

High polishability thanks to the micro-pearls



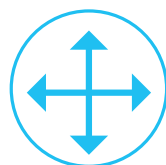
Bassissimo peso specifico

Very low specific weight



Colorazione molto stabile nel tempo

Colour very stable in time



Ottimale compattezza e stabilità dimensionale

Excellent compactness and dimensional stability



Minore retrazione

Minimal shrinkage



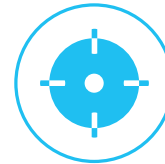
6 REASONS FOR CHOOSING VERTYSYSTEM EQUIPMENT



Semplicità di utilizzo
Easy to use



Sicurezza del risultato
Predictability of the result



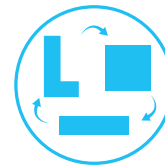
**Posizione sempre certa del
modello**
*Position of the model
always certain*



Ripetibilità dei lavori
*Possibility to reproduce all types
of work*



**Materiali esclusivi, di qualità
e resistenti nel tempo**
*Exclusive, high quality and high
performances materials*



**Intercambiabilità della
componentistica**
*Possibility to
inter-change components*



MODEL DEVE- LOP- MENT

Meglio costruiamo le fondamenta, più solido sarà il lavoro finito.

Better to build well the foundation, to get more solid finished work.



Model Development with Vertys Split Cast

Times



Vertysystem

10 min.

Video



[Scan this code!]
using the camera
of your phone

Protocol



[Scan this code!]
using the camera
of your phone

Model Development with Artic Pins

Times



Vertysystem

8 min.

Video



[Scan this code!]
using the camera
of your phone

Vertys Split Cast



Cod. 10-0010 2+2 pc
Cod. 10-0011 1+1 pc

VERTYS SPLIT CAST è un sistema per lo sviluppo dei modelli in gesso composto da una base in alluminio anodizzato e una gomma viola.

VERTYS SPLIT CAST is the system composed by a anodized aluminium base and a violet gum to poure stone model.





Artic Pins



Cod. 200-3100

ARTIC PINS è il sistema per lo sviluppo dei modelli con monconi sfilabili con ingaggio diretto per i modelli Vertysystem.

ARTIC PINS is the new system to develop master model with removable dies with the split of the Vertysystem.

Dimensions

Larg. / Width 8,5 cm
 Altez. / Height 7,7 cm
 Prof. / Depth 9,8 cm



Fissare l'impronta con
VERTYS PUTTY PRESS

*The impression is positioned
 using VERTYS PUTTY PRESS*



Ingaggiare la base **AP BLACK PLATE** con il coperchio

*Engage AP BLACK PLATE with
 the cover*



Cod. 200-3199
AP DRILL

Tramite raggio laser forare
AP BLACK PLATE con la fresa in
 dotazione

*AP BLACK PLATE is drilled using a
 laser guided drill with the bur provided*



**POLYURETHANE RESIN
 or PLASTER**

Sviluppare in gesso o in resina
 poliuretanic

*Develop the model in plaster
 or polyurethane resin*

EASY, CLEAN, REPEATABLE!

Cod. 101-0720

Genius Pastel



Cod. 200-2010

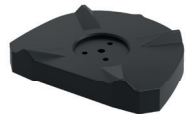
Vertys Pink



Cod. 200-3114-01

AP Black Plate

H: 10mm



ARTICU- LATOR



La messa in articolatore è una fase importante, fatti aiutare da Ar.go
Putting on articulator is a particular phase, let's get helped by Ar.go

6



Putting on articulator with Artic Pins

Times



Vertysystem

8 min.

Video



Scan this code!
using the camera
of your phone

Putting on articulator with Vertys Split Cast

Times



Vertysystem

10 min.

Video



Scan this code!
using the camera
of your phone

Protocol



Scan this code!
using the camera
of your phone

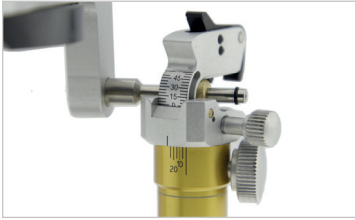
Cod. 10-3000

Ar.go



AR.GO è il nuovo articolatore in alluminio anodizzato con ingaggio diretto per i modelli Vertysystem.

AR.GO is the brand new articulator with the split cast of the Vertysystem.



Regolazione dell'angolo di Bennett da 0° a 25°

Setting of the Bennett angle from 0° to 25°



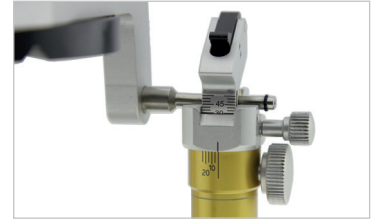
Supporto per lavorare a 45°

Tilt support to work at 45°



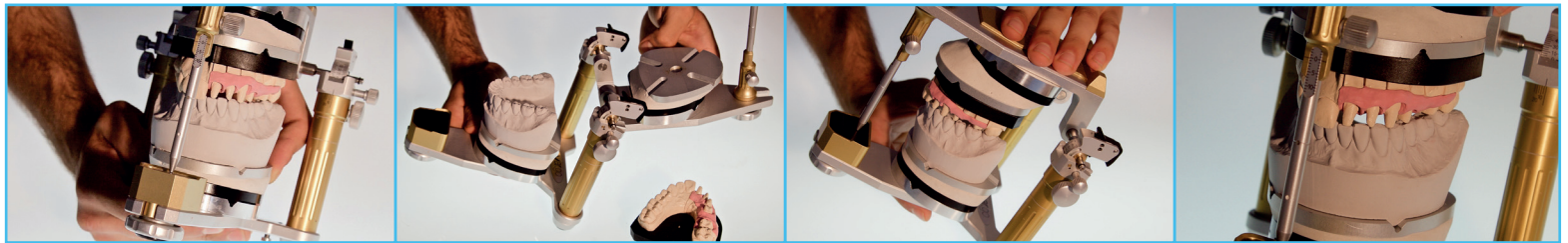
Apertura e chiusura della centrica

Open and close centric



Regolazione dell'inclinazione del tragitto condilare da -15° a +60°

Setting of condylar inclination from -15° to +60°



F A C E B O W

Cod. 10-3001
AR.GO FACE



FUR- BO FLASK

Il cuore pulsante del nostro sistema.
The beating heart of our system!

300°
furbo

6



#

+



Il sistema pensato da odontotecnici per tutte le lavorazioni.
The system designed by dental technicians for every work.



Furbo Alu Big
 Protesi Totale, Implant Bridge,
 Ribasatura Protesi
*Full Dentures, Implant Bridge,
 Dentures Relines*



Furbo Alu Small
 Provvvisori, Bite,
 Scheletrati
*Temporaries, Bite,
 Partial Dentures*



Furbo Plexi
 Stampaggio Ceramica, Implant
 Bridge, RegISTRAZIONI Occlusali
*Stamping ceramic, Implant
 Bridge, Occlusal Registration*



Furbo Composite
 Stampaggio e iniezione
 Compositi pasta e flou
*Pressing and injecting paste
 and flou Composites*

+ FOCUS + Da cosa è composto Furbo
What is Furbo composed

Base



Furbo
Base

Cover



Alu Big
Cover



Alu Small
Cover

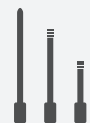


Plexi
Cover



Composite
Cover

Axis



Plexi Axis
Alu Axis
Comp. Axis

Split



Small
Split

Big
Split



FULL DENTU- RE

Un nuovo concetto di fare protesi economiche: per pressata o per iniezione, a te la scelta!
A brand new concept to realize economic full denture: by press or by injection, up to you!

6



#

+



Full Denture with Vertysystem

Times



Vertysystem

75 min.

Traditional

120 min.

Time Saved with Vertysystem

45 min.

Video



Scan this code!
using the camera
of your phone

Kit



Scan this code!
using the camera
of your phone

Protocol



Scan this code!
using the camera
of your phone

What to use



VERTYS ORANGE PLUS

60 g

VERTYS EASY PUTTY

190 g

HIGH SECURITY FLUID

10 g

VERTYS PROTHESIS EXCEL Powder

15 g

VERTYS PROTHESIS EXCEL Liquid

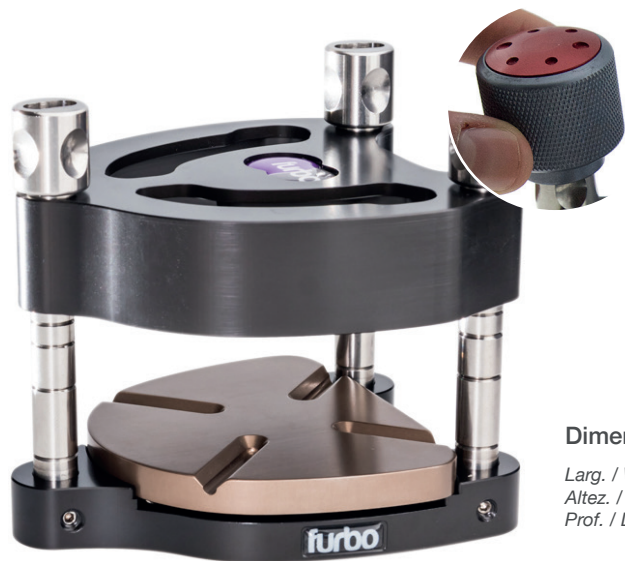
6 ml

Vertysystem Waxes

Fonte: Cost Sheets 2018

Full Denture

Equipment



Dimensions

Larg. / Width 96 mm
Altez. / Height 97 mm
Prof. / Depth 106 mm

Cod. 10-2501

Furbo Alu Big



Cod. 10-100

Apolix

Accessories



Cod. 10-401

Vertys Dynamo Block



Furbo Base



A.B. Cover



Alu Axis



Split Big

FOR THIS PROCESS THERE IS A SMART GUIDE HERE:



[Scan this code!]
using the camera
of your phone

www.vertysystem.com/assets/libro-iantosca.pdf

Full Denture Consumer

Cod. 200-2000

VERTYS ORANGE PLUS



Cod. 200-2020

HIGH SECURITY FLUID



Cod. 200-240_

VERTYS PROTHESIS EXCEL



Cod. 200-4002

VERTYS ORANGE SP. LUBE



Cod. 200-2001

VERTYS EASY PUTTY



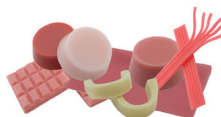
Cod. 200-4030

VERTYS RETARD



Cod. 200-5012

VERTYS WAX PACK BIG



Cod. 200-2490

VERTYS LUBE

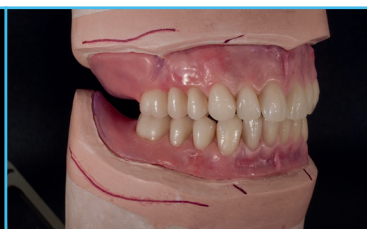


Come fare in 8 passaggi / How to Do it in 8 steps

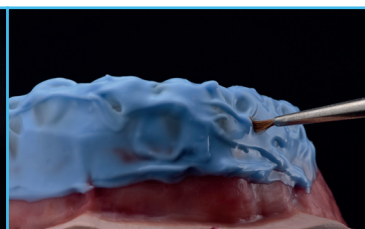
Mdpt. Raffaele Iantosca © Vertys Quality Labor



①



②



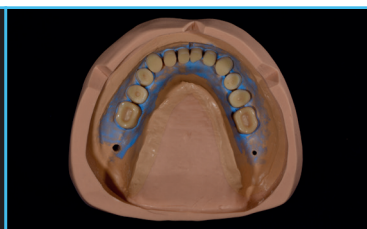
③



④



⑤



⑥



⑦



⑧

TEMPORARY

WITH VERTYS MONOMASSA

Un sistema di lavoro che garantisce comfort, praticità e risparmio di tempo.
A working system that grant you comfort, practicality and no waste of time.



Temporary with Vertysystem

Times



Vertysystem

30 min.

Traditional

60 min.

Time Saved with Vertysystem

30 min.

Video



[Scan this code!]
using the camera
of your phone

Kit



[Scan this code!]
using the camera
of your phone

Protocol



[Scan this code!]
using the camera
of your phone

What to use



VERTYS ORANGE PLUS

80 g

VERTYS EASY PUTTY

160 g

VERTYS PRECISION

4 g

VERTYS TEMPLUS MONOMASSA Powder

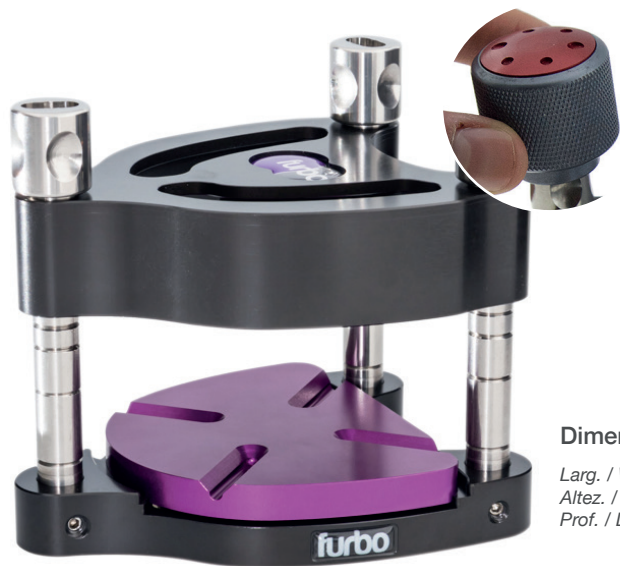
2,5 g

VERTYS TEMPLUS Liquid

5 ml

Font: Cost Sheets 2018

Temporary Equipment



Dimensions

Larg. / Width 84 mm
Altez. / Height 97 mm
Prof. / Depth 106 mm

Cod. 10-2500

Furbo Alu Small



Cod. 10-100

Apolix

Accessories



Cod. 10-401

Vertys Dynamo Block



Furbo Base



A.S. Cover



Alu Axis



Split Small

Temporary Consumer

Cod. 200-2000

VERTYS ORANGE PLUS



Cod. 200-2001

VERTYS EASY PUTTY



Cod. 200-2005

VERTYS PRECISION



Cod. 200-4030

VERTYS RETARD



Cod. 200-2715

VERTYS LATEX PINK



Cod. 200-2490

VERTYS LUBE



Cod. 200-230_

VERTYS TEMPLUS MONOMASSA



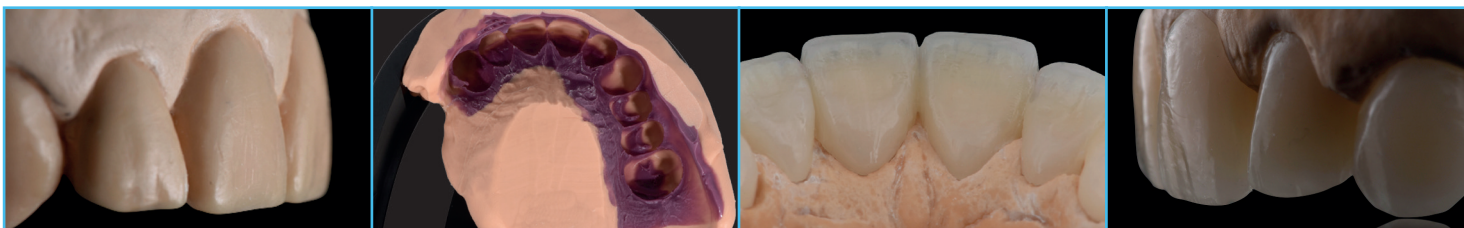
Cod. 200-2389

VERTYS INTENSIVE ORANGE



Come fare in 4 passaggi / How to Do it in 4 steps

Mdpt. Francesco Sottolano © Vertys Quality Labor



①

②

③

④

POR- CE- LAIN



Avere la certezza del risultato finale e la possibilità di ripeterlo ogniqualvolta vogliamo è fondamentale per noi tecnici.

Having the certainty of the final result and the possibility of repeating it whenever we want is essential for us dental technicians.



Porcelain with Vertysystem

Times



Vertysystem

30 min.

Traditional

60 min.

Time Saved with Vertysystem

30 min.

Video



[Scan this code!]
using the camera
of your phone

Kit



[Scan this code!]
using the camera
of your phone

Protocol



[Scan this code!]
using the camera
of your phone

What to use



VERTYS EASY PUTTY

40 g

VERTYS WHITE PRESS

10 g

Font: Cost Sheets 2018

Porcelain

Equipment



Cod. 10-2505

Furbo Plexi

**FOR THIS PROCESS THERE
IS A SMART GUIDE HERE:**



Scan this code!
using the camera
of your phone

www.vertysystem.com/assets/libro-oral-tecnica.pdf



Accessories



Cod. 10-250

Vertys Inclined Planes



Furbo Base



Plexi Cover



Plexi Axis



Split Small

Dimensions

Larg. / Width 84 mm
Altez. / Height 127 mm
Prof. / Depth 109 mm

Porcelain

Consumer

Cod. 200-2001

VERTYS EASY PUTTY



Cod. 200-2006

VERTYS WHITE PRESS



Cod. 200-4030

VERTYS RETARD



Come fare in 8 passaggi / How to Do it in 8 steps

Mdpt. Massimo Fabbro © Vertys Quality Labor



①

②

③

④



⑤

⑥

⑦

⑧

A close-up photograph of a dental bridge on a model. The bridge consists of several white, realistic-looking teeth mounted on a pinkish, fleshy-looking base. The lighting is dramatic, highlighting the texture and contours of the teeth and the bridge structure. The background is dark, making the bridge stand out.

DIGITAL TORON- TO BRI- DGE

Controllo in ogni singolo passaggio.
The control in every single step.



Toronto Bridge with Vertysystem

Times



Vertysystem

3 hrs.

Traditional

10 hrs.

Time Saved with Vertysystem

7 hrs.

Video



[Scan this code!]
using the camera
of your phone

Kit



[Scan this code!]
using the camera
of your phone

Protocol



[Scan this code!]
using the camera
of your phone

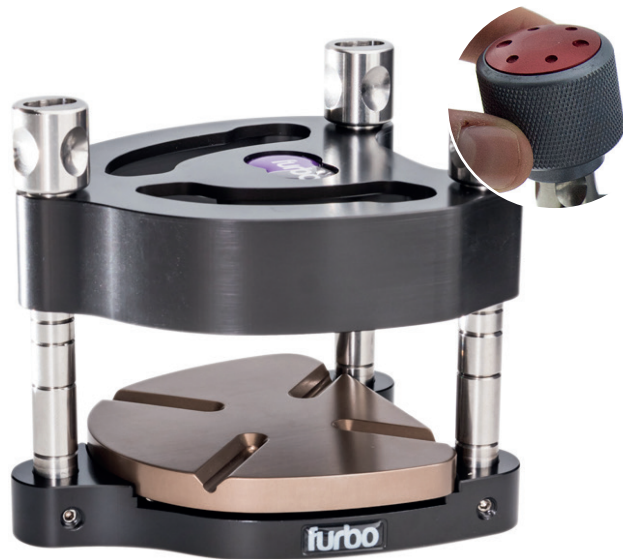
What to use



VERTYS ORANGE PLUS	180 g
VERTYS EASY PUTTY	390 g
HIGH SECURITY FLUID	10 g
VERTYS PROTHESIS EXCEL Powder	10 g
VERTYS PROTHESIS EXCEL Liquid	6 ml
VERTYS RED FIRE Gel	1,5 g
VERTYS RED FIRE Paste	6 g

Digital Toronto Bridge

Equipment



Cod. 10-2501

Furbo Alu Big

Dimensions

Larg. / Width 96 mm
Altez. / Height 97 mm
Prof. / Depth 106 mm



Furbo Base



A.B. Cover



Alu Axis



Split Big



Cod. 10-2505

Furbo Plexi

Dimensions

Larg. / Width 84 mm
Altez. / Height 127 mm
Prof. / Depth 109 mm



Furbo Base



Plexi Cover



Plexi Axis



Split Small



Accessories



Cod. 10-401

Vertys Dynamo Block



Cod. 10-250

Vertys Inclined Planes



Cod. 11-2200

MoonWhite Scanner



Cod. 11-3500

MoonRay 3D Printer



Cod. 11-3800

MoonWash



Cod. 11-3900

MoonLight

Cod. 200-2000

VERTYS ORANGE PLUS



Cod. 200-2010

VERTYS PINK



Cod. 200-240_

VERTYS PROTHESIS EXCEL



Cod. 200-2700

VERTYS OPAK PINK KIT



Cod. 200-2001

VERTYS EASY PUTTY



Cod. 200-2020

HIGH SECURITY FLUID



Cod. 200-23_ _

VERTYS MONOMASSA



Cod. 200-2490

VERTYS LUBE



Cod. 200-2511

VERTYS RED FIRE GEL



Cod. 200-2514

VERTYS RED FIRE PASTE



FOR THIS PROCESS THERE IS A SMART GUIDE HERE:



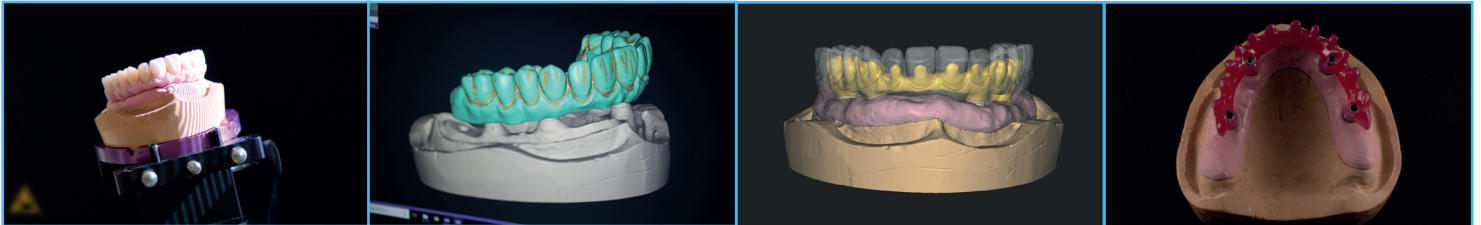
Scan this code!
using the camera
of your phone

www.vertysystem.com/assets/libro-artitec.pdf

Digital Toronto Bridge

Come fare in 16 passaggi / *How to Do it in 16 steps*

Dental Lab. Artitec © Vertys Quality Labor

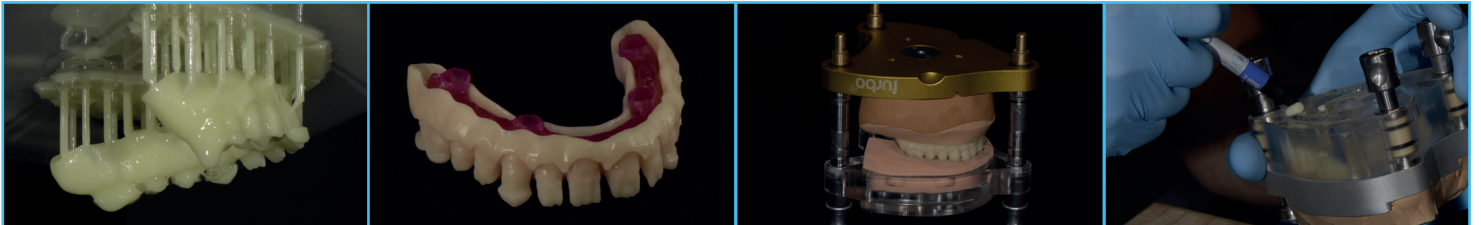


①

②

③

④



⑤

⑥

⑦

⑧

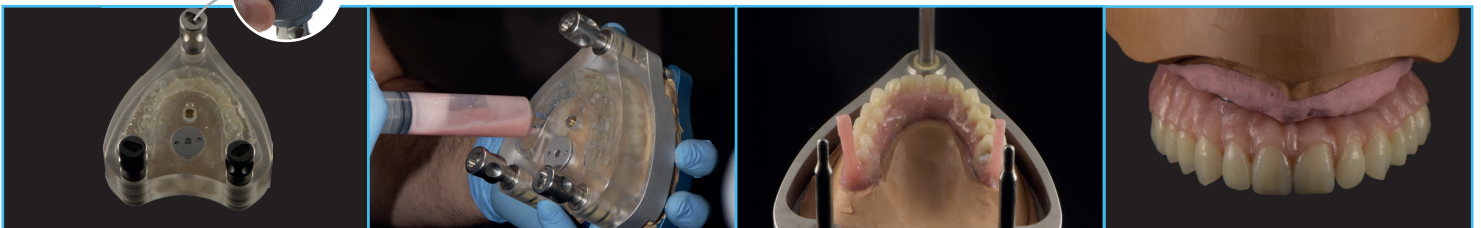


⑨

⑩

⑪

⑫



⑬

⑭

⑮

⑯

COMPO- SITES



Come rendere semplice qualcosa di molto complesso.
How to simplify something is very difficult.



Composites with Vertysystem

Times



Vertysystem

6 hrs.

Traditional

10 hrs.

Time Saved with Vertysystem

4 hrs.

Video



[Scan this code!]
using the camera
of your phone

Kit



[Scan this code!]
using the camera
of your phone

Protocol



[Scan this code!]
using the camera
of your phone

What to use

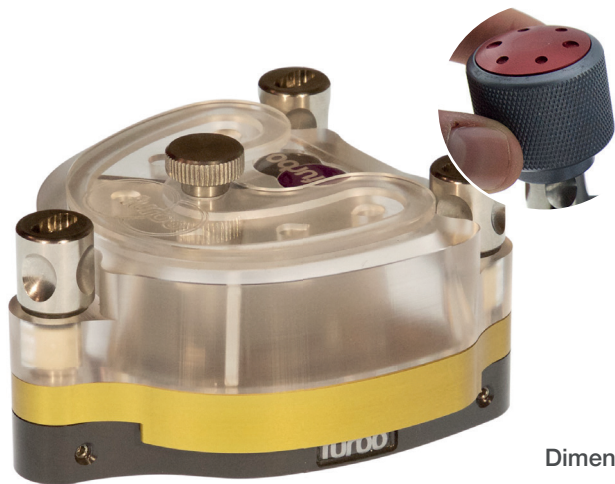


VERTYS ORANGE PLUS	40 g
VERTYS PUTTY PRESS	100 g
VERTYS MEDIUM GLASS	110 g
VERTYS HEAVY GLASS	10 g

Font: Cost Sheets 2018

Composites

Equipment



Cod. 10-2580

Furbo Composite

Dimensions

Larg. / Width 96 mm
Altez. / Height 65 mm
Prof. / Depth 109 mm



Accessories

Cod. 10-401



Vertys Dynamo Block



Furbo Base



Comp Cover



Comp Axis x3



Split Big



Cod. 10-100

Apolix



Cod. 11-3900

Moonlight

Composites

Consumer

Cod. 200-2002

VERTYS PUTTY PRESS



Cod. 200-2007

VERTYS HEAVY GLASS



Cod. 200-2008

VERTYS LIGHT GLASS



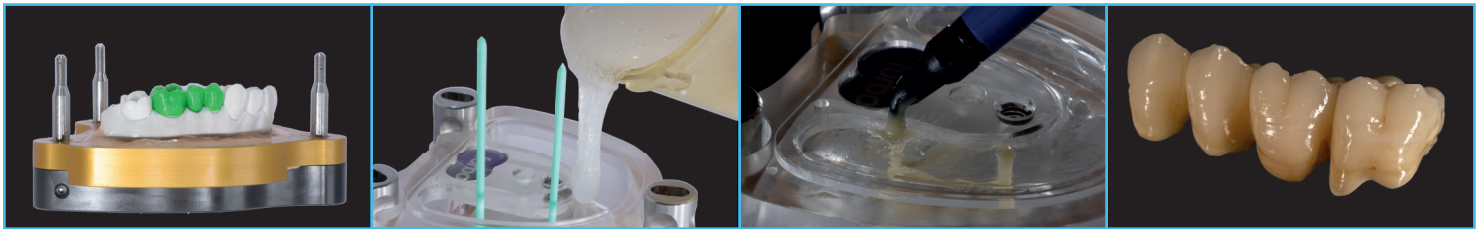
Cod. 200-2015

VERTYS MEDIUM GLASS



Come fare in 4 passaggi / How to Do it in 4 steps

Mdpt. Francesco Sottolano © Vertys Quality Labor



①

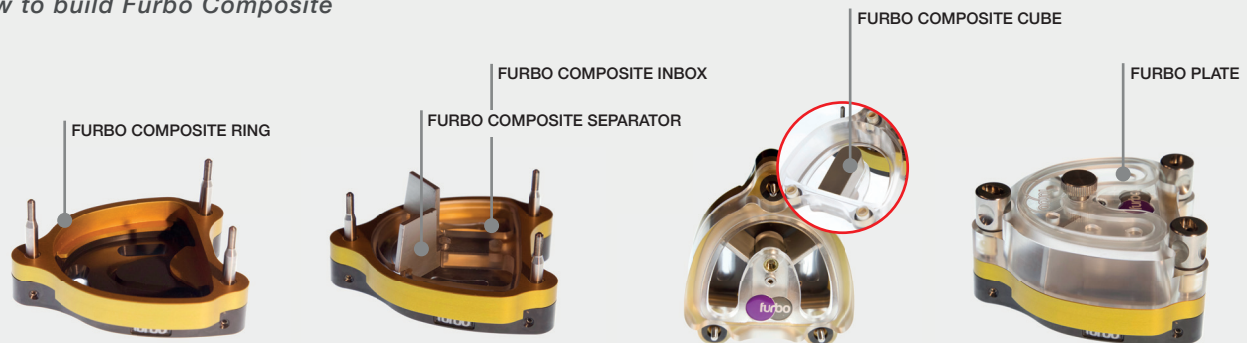
②

③

④

+ FOCUS +

Come si compone Furbo Composite How to build Furbo Composite





CODES

In questa sezione troverai tutti i codici dei nostri prodotti, divisi per categoria.
Buona ricerca!

*In this section you'll find all the codes of our products, cataloged per category.
Enjoy your searching!*

6



Attrezzature
Equipment



Accessori
Accessories



VertysDigital
VertysDigital



Materiali di consumo
Consumer material



Vertys Line
Vertys Line



ARTIC PINS



	200-3100 INTRO KIT	200-3101 LABOR KIT
Artic Pins	1	1
200-3108	1	2
200-3114	10	50
200-3115	-	50
200-3116	25	-
200-3120	100	1000



**200-3102
ARTIC PINS BASE ALU**
Base in alluminio anodizzato
Aluminium anodized base



**200-3104
ARTIC PINS TEMPLATE**
Cover in alluminio anodizzato
Anodized aluminium cover



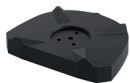
**200-3105
AP GUIDE**
Guida in plexiglass
Plexiglass Dima



**200-3106
ARTIC PINS AXIS KIT**
Aste sfilabili graduate in acciaio inox | Conf: 3 pz
Graduated reamovable axis in acciaio inox | Pack: 3 pcs



**200-3108
ARTIC PINS BURS**
Fresa in carburo di tungsteno | Conf: 2 pz
Tungsten Carbide bur | Pack: 2 pcs



**200-3114
ARTIC PINS BLACK PLATE**
Basetta in tecnopolimero nera H: 10 mm | Conf: 50 pz
Technopolymer black base H: 10 mm | Pack: 50 pcs

Sistema per modelli con monconi sfilabili
System to get removable dies



**200-3115
ARTIC PINS METAL DISC**
Dischi di metallo brunito completi di vite
Ø: 24 mm H: 2 mm | Conf: 50 pz
*Metal discs complete with vine
Ø: 24 mm H: 2 mm | Pack: 50 pcs*



**200-3116
ARTIC PINS METAL DISC**
Dischi di metallo brunito completi di vite
Ø: 24 mm H: 2 mm | Conf: 25 pz
*Metal discs complete with vine
Ø: 24 mm H: 2 mm | Pack: 25 pcs*



**200-3120
AP PINS**
Perni conici in ottone per monconi sfilabili L: 16,5 mm
Conf: 1000 pz
Brass pins for reamovable dies L: 16,5 mm | Pack: 1000 pcs



**200-3130
AUTOMATIC PUNCH**
Punzone automatico spingi-perni
Automatic punch



**200-3140
AP ADAPTER**
Adattatore per foragessi Zeiser P10 e Giroform
Stainless steel adapter for pins machines Renfert and Giroform



**10-2535
GRAIN BLOCK**
Vite di bloccaggio per le basi | Conf: 3 pz
Vine to screw into the base | Pack: 3 pcs

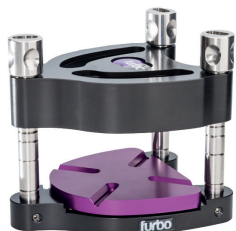


**10-2550
ALLEN KEY**
Chiave a brugola per estrazione / serraggio aste
Allen Key to screw / un-screw axis



FURBO ALU SMALL

Muffola completa per provvisori
Complete flask to get temporaries



Ideal for:

Provvisori / Temporaries
Bite / Bite
Scheletrati / Partial Dentures



Dimensions:

Larghezza / Length: 84 mm
Altezza / Height: 97 mm
Profondità / Depth: 106 mm

Cod. 10-2500



10-2510 FURBO BASE

Base in alluminio anodizzato
Aluminium anodized base



10-2535 GRAIN BLOCK

Vite di bloccaggio per le basi | Conf: 3 pz
Vine to screw into the base | Pack: 3 pcs



10-200 BASE SPLIT SMALL

Base split piccola con ingaggio Vertysystem in alluminio anodizzato
Anodized aluminium small split base with Vertysystem engage



10-2550 ALLEN KEY

Chiave a brugola per estrazione / serraggio aste
Allen Key to screw / un-screw axis



10-2520 FURBO ALU SMALL COVER

Coperchio small in alluminio anodizzato
Anodized aluminium small cover



10-0021 SMALL BURS

Alesatore piccolo per fresare i siliconi
Small burs to make the exit hole in silicones



10-0022 BIG BURS

Alesatore grande per fresare i siliconi
Big burs to make the exit hole in silicones



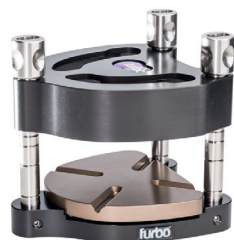
10-2538 KIT AXIS FURBO ALU

Kit di aste per Furbo Alu Small & Big complete di dadi di bloccaggio e distanziali
Axis Kit for Furbo Alu Small & Big complete with blocking nuts and spacers



FURBO ALU BIG

Muffola completa per protesi mobile
Complete flask for full denture



Cod. 10-2501



Ideal for:

Protesi Mobile / Full Denture
Bite / Bite
Toronto Bridge / Implant Bridge
Scheletrati / Partial Denture



Dimensions:

Larghezza / Length: 96 mm
Altezza / Height: 97 mm
Profondità / Depth: 106 mm



10-2510 FURBO BASE

Base in alluminio anodizzato
Aluminium anodized base



10-2535 GRAIN BLOCK

Vite di bloccaggio per le basi | Conf: 3 pz
Vine to screw into the base | Pack: 3 pcs



10-202 BASE SPLIT BIG

Base split grande con ingaggio Vertysystem in alluminio anodizzato
Anodized aluminium big split base with Vertysystem engage



10-2550 ALLEN KEY

Chiave a brugola per estrazione / serraggio aste
Allen Key to screw / un-screw axis



10-2521 FURBO ALU BIG COVER

Coperchio big in alluminio anodizzato
Anodized aluminium big cover



10-0021 SMALL BURS

Alesatore piccolo per fresare i siliconi
Small burs to make the exit hole in silicones



10-0022 BIG BURS

Alesatore grande per fresare i siliconi
Big burs to make the exit hole in silicones



10-2538 KIT AXIS FURBO ALU

Kit di aste per Furbo Alu Small & Big complete di dadi di bloccaggio e distanziali
Axis Kit for Furbo Alu Small & Big complete with blocking nuts and spacers



FURBO PLEXI

Verticolatore per stampaggio ceramica
Verticulator to stamp ceramic



Cod. 10-2505



Ideal for:

Stampaggio ceramica / *Stamping ceramic*
Registrazioni Occlusali / *Occlusal Registrations*
Toronto Bridge / *Toronto Bridge*
Stampaggio composito / *Stamping Composites*



Dimensions:

Larghezza / *Length*: 84 mm
Altezza / *Height*: 127 mm
Profondità / *Depth*: 109 mm



10-2510
FURBO BASE

Base in alluminio anodizzato
Aluminium anodized base



10-2535
GRAIN BLOCK

Vite di bloccaggio per le basi | Conf: 3 pz
Screw to screw into the base | Pack: 3 pcs



10-200
BASE SPLIT SMALL

Base split piccola con ingaggio Vertysystem in alluminio anodizzato
Anodized aluminium small split base with Vertysystem engage



10-2550
ALLEN KEY

Chiave a brugola per estrazione / serraggio aste
Allen Key to screw / un-screw axis



10-2522
FURBO PLEXI COVER

Coperchio aperto in plexiglass per Furbo Plexi
Plexiglass opened cover for Furbo Plexi



10-2524
FURBO PLATE

Plate di chiusura per Furbo Plexi Cover
Closing plate to engage on Furbo Plexi Cover



10-2539
KIT AXIS FURBO PLEXI

Kit di aste per Furbo Plexi complete di Fermo Vertys e distanziali
Axis Kit for Furbo Plexi complete with Fermo Vertys and spacers



FURBO PARALLEL

Parallelometro da abbinare alla Base Furbo
Parallel to combine with the Furbo Base



10-2577

KIT

Furbo Parallel	1
10-2510	1
10-2550	1
10-2570	1
10-2572	1
10-2573	1
10-2574	1
10-2375	1



10-2570

FURBO PARALLEL

Parallelometro da abbinare alla Base Furbo
Parallel to combine with Furbo Base



10-2510

FURBO BASE

Base in alluminio anodizzato
Aluminium anodized base



10-2571

FURBO PARALLEL SPINDLE

Mandrino porta laser
Support for laser accommodation



10-2572

FURBO PARALLEL LASER

Laser con luce led
Laser with Led Light



10-2573

FURBO PARALLEL BIT

Punta d'analisi
Analysis Bit



10-2574

FURBO PARALLEL GRAPHITE

Matita per segnare i monconi
Graphite



10-2575

FURBO PARALLEL ANALYSIS KIT

10-2575-25 FURBO PARALLEL CALIB. Ø 0,25 mm
10-2575-50 FURBO PARALLEL CALIB. Ø 0,50 mm
10-2575-75 FURBO PARALLEL CALIB. Ø 0,75 mm



10-2575-25

FURBO PARALLEL CALIB. Ø 0,25

Calibratore con diametro 0,25 mm
Calibrator Ø 0,25 mm



10-2575-50

FURBO PARALLEL CALIB. Ø 0,50

Calibratore con diametro 0,50 mm
Calibrator Ø 0,50 mm



10-2575-75

FURBO PARALLEL CALIB. Ø 0,75

Calibratore con diametro 0,75 mm
Calibrator Ø 0,75 mm



10-2535

GRAIN BLOCK

Vite di bloccaggio per le basi | Conf: 3 pz
Vine to screw into the base | Pack: 3 pcs



10-2550

ALLEN KEY

Chiave a brugola per estrazione / serraggio aste
Allen Key to screw / un-screw axis



FURBO COMPOSITE



	10-2580 TOP	10-2581 BASE
Furbo Composite	1	1
10-2584	1	-
10-2524	1	-
10-2587	1	-
10-2588	1	-
10-401	1	-

Muffola per lo stampaggio e l'iniezione dei compositi
Flask for the injection and stamping composites



Ideal for:

Stampaggio e iniezione Compositi
 Stamping and injecting composites



Dimensions:

Larghezza / Length: 96 mm
 Altezza / Height: 65 mm
 Profondità / Depth: 109 mm



10-2586

FURBO COMPOSITE INSIDE

Muffola in plexiglass per l'iniezione dei compositi flou
 Larghezza: 9,3 cm Altezza: 3,4 cm Profondità: 7,8 cm
Transparent plexi flask for the injection of flou composites
 Length: 9,3 cm Height: 3,4 cm Depth: 7,8 cm



10-2584

FURBO COMPOSITE INBOX

Inserto da abbinare alla base Furbo o a Furbo Composite Upbox
Base to lay into Furbo Composite Ring or with Furbo Composite Upbox



10-2585

FURBO COMPOSITE UPBOX

Coperchio in plexiglass da abbinare a Furbo Composite Inbox
Plexiglass cover that combines with Furbo Composite Inbox



10-2582

FURBO COMPOSITE COVER

Cover in plexiglass trasparente
Plexiglass transparent cover



10-2524

FURBO PLATE

Plate di chiusura per coperchio Furbo Plexi & Furbo Composite
Plexiglass transparent plate for Furbo Plexi & Furbo Composite



10-2583

FURBO COMPOSITE RING

Anello di appoggio alla Base Furbo in alluminio anodizzato
Anodized Aluminium Ring to lay on Furbo Base



10-2583H

FURBO COMPOSITE SPACER

Anello distanziale che alza la muffola di 6 mm
Spacer ring that lift the flask up by 6 mm



10-2587

FURBO COMPOSITE SEPARATOR

Divisori per risparmio materiale silicónico | Conf: 2 pz
Dividers to save waste of material | Pack: 2 pcs



10-2588

FURBO COMPOSITE CUBE

Separatore in alluminio anodizzato che si fissa su Furbo Composite Inbox per risparmio materiale
Separator in anodized aluminium to screw with Furbo Composite Upbox in order to save waste of material



10-2589

FURBO COMPOSITE SHORT AXIS

Aste corte da 48 mm | Conf: 3 pz
Short axis 48 mm specific for Furbo Composite | Pack: 3 pcs



10-2589L

FURBO COMPOSITE LONG AXIS

Aste corte da 54 mm | Conf: 3 pz specifiche per Furbo Composite | Conf: 3 pz
Short axis 54 mm specific for Furbo Composite | Pack: 3 pcs



10-213-03

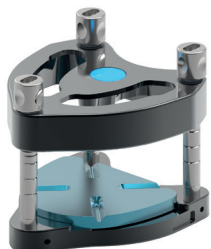
ALU NUT

Dado in acciaio inox | Conf: 3 pz
Stainless steel blocking nut | Pack: 3 pcs



ALU EXTREME

Muffola XXL per protesi mobile
XXL flask ideal for Full Denture



Ideal for:

Protesi Mobile / Full Denture
Bite / Bite
Toronto Bridge / Implant Bridge
Scheletrati / Partial Denture



Dimensions:

Larghezza / Length: 111 mm
Altezza / Height: 106 mm
Profondità / Depth: 116 mm

Cod. 10-2503



10-2513
ALU EXTREME BASE
Base in alluminio anodizzato
Aluminium anodized base



10-213-03
ALU NUT
Dado in acciaio inox | Conf: 3 pz
Stainless steel blocking nut | Pack: 3 pcs



10-204
BASE SPLIT EXTREME
Base split grande con ingaggio Vertysystem in alluminio anodizzato
Anodized aluminium big split base with Vertysystem engage



10-2535
GRAIN BLOCK
Vite di bloccaggio per le basi | Conf: 3 pz
Vine to screw into the base | Pack: 3 pcs



10-2519
FURBO ALU BIG COVER
Coperchio Extreme in alluminio anodizzato
Anodized aluminium Extreme cover



10-2550
ALLEN KEY
Chiave a brugola per estrazione / serraggio aste
Allen Key to screw / un-screw axis



10-0021
SMALL BURS
Alesatore piccolo per fresare i siliconi
Small burs to make the exit hole in silicones



10-0022
BIG BURS
Alesatore grande per fresare i siliconi
Big burs to make the exit hole in silicones



10-2533
ALU EXTREME AXIS
Kit di aste per Alu Extreme complete di dadi di bloccaggio e distanziali
Axis Kit for Alu Extreme complete with blocking nuts and spacers



VERTYS SPLIT CAST

Sistema per lo sviluppo dei modelli in gesso
System for pouring stone model



10-0010

VERTYS SPLIT CAST & GUM

Base split-cast per sviluppo modelli | Conf: 2+2 pz
System for the pouring stone model | Pack: 2+2 pcs



10-0014

VERTYS SPLIT CAST GUM

Anello di Gomma per base Split Cast | Conf: 2 pz
Ring gum to combine with Split Cast | Pack: 2 pcs



10-0011

VERTYS SPLIT CAST & GUM

Base split-cast per sviluppo modelli | Conf: 1+1 pz
System for the pouring stone model | Pack: 1+1 pcs



10-0016

VERTYS SPLIT M BIG

Basetta con ingaggio Vertysystem dove
gessare il modello | Conf: 1 pc
*Plastic base with Vertysystem engage to link plaster model
in | Pack: 1 pc*



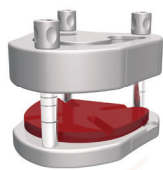
VERTYS ALU SMALL (Vers. 1)

Muffola per sviluppo provvisori per polimerizzatori piccoli
Temporary flask ideal for small Polymerizer

10-0002

VERTYS ALU SMALL

Muffola piccola in alluminio anodizzato con dadi specifici
per polimerizzatore Ivomat
*Anodized aluminium small flask for those who use polyme-
rizer Ivomat*



Dimensions:

Larghezza / Width: 9,2 cm

Altezza / Height: 8,9 cm

Profondità / Depth: 10,2 cm

10-215-03

ALU NUT (VERS. 1)

Dado in acciaio inox per utilizzatori Ivomat | Conf: 3 pz
Stainless steel blocking nut for Ivomat users | Pack: 3 pcs





AR.GO

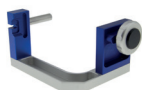
Articolatore compatibile con sistema Vertysystem
Articulator with engage for Vertysystem



10-3000
AR.GO
Articolatore in alluminio anodizzato grigio e oro compatibile con Vertysystem
Anodized aluminium Articulator with engage for Vertysystem



10-3001
AR.GO FACE
Arco facciale in alluminio anodizzato
Anodized aluminium Face bow



10-3002
AR.GO TRANSFER
Trasferitore della forchetta dell'arco facciale (Ar.Go Face) in articolatore
Facebow Fork transfer (Ar.Go Face) to articulator



10-3003
AR.GO SUPPORT
Supporto in alluminio anodizzato per calibrazione verticalità della forchetta dell'arco facciale
Anodized aluminium support to check the height and the parallelism of facebow fork



10-3005
AR.GO TARE
Chiave di taratura in alluminio anodizzato per regolare l'altezza dell'articolatore
Anodized aluminium calibration key to set the height of the articulator



10-3006
AR.GO SPLIT TARE
Basetta femmina in alluminio anodizzato per taratura | Conf: 1pz
Anodized aluminium Female split base | Pack: 1pz



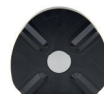
10-3015-F2
AR.GO SPLIT F2
Base split femmina in alluminio anodizzato con ingaggio Vertysystem per articolatore Ar.Go | Conf: 2 pz
Anodized aluminium Female split base with Vertysystem engage for Ar.Go articulator | Pack: 2 pcs



10-3019-01
AR.GO SPLIT M
Base split maschio in tecnopolimero con ingaggio Vertysystem per articolatore Ar.Go | Conf: 1 pz
Technopolymer Male split base with Vertysystem engage for AR.GO articulator | Pack: 1 pc



10-3019-M2
AR.GO SPLIT M2
Base split maschio in tecnopolimero con ingaggio Vertysystem per articolatore Ar.Go | Conf: 2 pz
Technopolymer Male split base with Vertysystem engage for Ar.Go articulator | Pack: 2 pcs



10-3019-M6
AR.GO SPLIT M6
Base split maschio in tecnopolimero con ingaggio Vertysystem® per articolatore AR.GO | Conf: 6 pz
Technopolymer Male split base with Vertysystem® engage for AR.GO articulator | Pack: 6 pcs

GALETTI



200-2800
GALETTI ARTICULATOR
Articolatore con ingaggio Vertysystem® per fissare i modelli all'articolatore senza bisogno di gesso
Articulator compatible with Vertysystem to mount stone model without plaster



APOLIX

Polimerizzatore a pressione elettronico per cottura resine
Electronic polymerizer to cure resins



Features:

- 4 Programmi Vertysystem già impostati e 6 liberi /
4 Vertysystem Programme already set and 6 free
- Completamente elettronico / *Completely electronic*
- Interfaccia semplice e intuitiva / *Interface and set up very easy*



Dimensions:

Larghezza / *Lenght*: 111 mm
Altezza / *Heigh*: 106 mm
Profondità / *Depth*: 116 mm



10-100 APOLIX

Termopolimerizzatore elettronico a pressione
Electronic polymerizer to cure resins



10-134 APOLIX WATER VALVE

Valvola dell'acqua per polimerizzatore Apolix
Water valve for polymerizer Apolix



10-130 APOLIX CU-BA (Curing Basket)

Cestello per facilitare l'ingresso e l'estrazione degli oggetti dalla camera di Apolix
Curing basket to easily put and extract the flask from the chamber



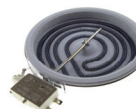
10-136 APOLIX COVER RING

Guarnizione in silicone arancione per il coperchio
Orange silicone gasket



10-132 APOLIX AIR VALVE

Valvola dell'aria per polimerizzatore Apolix
ApolixAir valve for polymerizer Apolix



10-138 APOLIX HEATER

Termo resistenza
Heat resistance

NYLWAX GUN

Sistema per l'iniezione di materiali termo-plastici
Injection system for thermo-plastic materials



200-3200 NYLWAX GUN | WAX KIT

Sistema per iniezione cera
System for wax injection



200-3230 NYL ROSE

Polipropilene medicale rosa | Conf: 100g
Pink Nylon (medical polypropilene) | Pack: 100g



200-3201 NYLWAX GUN | NYL KIT

Sistema per iniezione polipropilene medicale
System for polypropilene injection



200-3235 NYL GLASS

Polipropilene medicale trasparente | Conf: 100g
Transparent Nylon (medical polypropilene) | Pack: 100g



VERTYS ARIC LINK

Sistema universale di collegamento all' Articolatore
Linking to articulator system split bases



10-0015-F1
VERTYS ARTIC LINK F 1
Base di collegamento all'articolatore femmina (F) in alluminio fresato | Conf: 1 pz
Linking to articulator female (F) aluminium base | Pack: 1 pc



10-0015
VERTYS ARTIC LINK F 2
Base di collegamento all'articolatore femmina (F) in alluminio fresato | Conf: 2 pz
Linking to articulator female (F) aluminium base | Pack: 2 pcs



10-0019-M1
VERTYS ARTIC LINK M 1
Base di collegamento all'articolatore maschio (M) in alluminio anodizzato | Conf: 1 pz
Linking to articulator male (M) aluminium base Pack: 1 pc



10-0019
VERTYS ARTIC LINK M 2
Base di collegamento all'articolatore maschio (M) in alluminio anodizzato | Conf: 2 pz
Linking to articulator male (M) aluminium base | Pack: 2 pcs



10-1050
VERTYS ARTIC LINK F 1 + M 1
Basi di collegamento all'articolatore: 1 femmina (F) in alluminio + 1 maschio (M) in tecno-polimero | Conf: 1+1 pz
Linking bases to articulator (female+male) 1 aluminium (F) + 1 technopolymer (M) | Pack: 1+1 pcs



10-1056-M4
VERTYS ARTIC LINK M 4
Base di collegamento maschio (M) in tecno-polimero da collegare a Vertys Artic Link F | Conf: 4 pz
Linking to articulator male technopolymer base to link to Vertys Artic Link F | Pack: 4 pcs



10-1056
VERTYS ARTIC LINK M 10
Base di collegamento maschio (M) in tecno-polimero da collegare a Vertys Artic Link F | Conf: 10 pz
Linking to articulator male technopolymer base to link to Vertys Artic Link F | Pack: 10 pcs



10-1061
VERTYS MAGNETIC ARTIC LINK 5
Magneti per ARTIC LINK F & M
Ø: 20 mm H: 5 mm | Conf: 5 pz
Magnets for ARTIC LINK F & M Ø: 20 mm H: 5 mm | Pack: 5 pcs



10-1062
VERTYS MAGNETIC & METAL DISC
Magneti per ARTIC LINK F & M
Ø: 20 mm H: 5 mm | Conf: 5+5 pz
Magnets for ARTIC LINK F & M Ø: 20 mm H: 5 mm | Pack: 5+5 pcs



10-1063
VERTYS MAGNETIC ARTIC LINK 10
Magneti per ARTIC LINK F & M
Ø: 20 mm H: 5 mm | Conf: 10+10 pz
Magnets for ARTIC LINK F & M Ø: 20 mm H: 5 mm | Pack: 10+10 pcs



10-301-05
VERTYS METAL DISC
Disco di metallo brunito per ARTIC LINK M Ø: 20 mm
H: 3 mm | Conf: 5 pz
Metal disc for ARTIC LINK M Ø: 20 mm H: 3 mm | Pack: 5 pcs



10-301-10
VERTYS METAL DISC
Disco di metallo brunito per ARTIC LINK M Ø: 20 mm
H: 3 mm | Conf: 10 pz
Metal disc for ARTIC LINK M Ø: 20 mm H: 3 mm | Pack: 10 pcs



INCLINED PLANES

Split inclinati con ingaggio Vertysystem
Inclined split with Vertysystem engage



10-250

VERTYS INCLINED PLANE KIT

Kit di basi split con inclinazione a: 6° 9° 12° per Furbo Plexi e Furbo Alu Small e Furbo Alu Big | Conf: 3 pz
Inclined bases Kit 6° - 9° - 12° for Furbo Plexi and Furbo Alu Small and Furbo Alu Big | Pack: 3 pcs



10-254

VERTYS INCLINED PLANE 9°

Basi split con inclinazione a 9° per Furbo Plexi e Furbo Alu Small e Furbo Alu Big
Inclined bases 9° for Furbo Plexi and Furbo Alu Small and Furbo Alu Big



10-252

VERTYS INCLINED PLANE 6°

Basi split con inclinazione a 6° per Furbo Plexi e Furbo Alu Small e Furbo Alu Big
Inclined bases 6° for Furbo Plexi and Furbo Alu Small and Furbo Alu Big



10-256

VERTYS INCLINED PLANE 12°

Basi split con inclinazione a 12° per Furbo Plexi e Furbo Alu Small e Furbo Alu Big
Inclined bases 12° for Furbo Plexi and Furbo Alu Small and Furbo Alu Big

VERTYS DYNAMO BLOCK

Dado dinamometrico per la chiusura omogenea delle muffole
Torque nut to lock all the flask at the same pressure



10-401

VERTYS DYNAMO BLOCK

Dado speciale dinamometrico per la chiusura omogenea di tutte le muffole a 8 N (newton)
Special torque nut for locking flasks at the same pressure point 8 N (newton)



SCANNER

Sistemi di scansione a luce bianca e a luce blu
Scanning systems white and blue light technology



11-2200
MOONWHITE BASE NEW
Scanner 3D a luce strutturata bianca, camera 3 MP con Texture a colori. Accuratezza ca, 5µm, Tempo di scansione minore di 5 secondi per ripresa | Completo di Software: Exocad Base
3D Scanner with structured white light, 3 MP camera with colorful Texture, Accuracy ca 5µm, Scan time less than 5 seconds per shot | Complete with Software: Exocad Base



11-2210
MOONWHITE PLUS NEW
Scanner 3D a luce strutturata bianca, camera 3 MP con Texture a colori. Accuratezza ca, 5µm, Tempo di scansione minore di 5 secondi per ripresa | Completo di Software: Exocad Base, Barre, Impianti
3D Scanner with structured white light, 3 MP camera with colorful Texture, Accuracy ca 5µm, Scan time less than 5 seconds per shot | Complete with Software: Exocad Base, Implants, Bars



11-MSI
Personal Computer 64 bit
Completo di Tastiera e Mouse
*Personal Computer 64 bit
Complete with: Keyboard and Mouse*



11-0350
Monitor Led Full HD 24"
24" Led Full HD Monitor



EXO-BASE
EXOCAD BASE MODULE
Modulo ExoCad Base
Module ExoCad Base



EXO-I
EXOCAD IMPLANT MODULE
Modulo ExoCad per impianti
Module ExoCad for implants



EXO-B
EXOCAD BAR MODULE
Modulo ExoCad per barre
Module ExoCad for bars



EXO-P
EXOCAD PROVISIONAL MODULE
Modulo ExoCad per provvisori
Module ExoCad for temporary



EXO-A
EXOCAD ARTICULATOR MODULE
Questo modulo permette di gestire risultati occlusali simili a quelli degli articolatori da banco.
ExoCad articulator Module. This Module permit to manage occlusal results as those with traditional articulator



EXO-MC
EXOCAD MODEL CREATOR
Modulo ExoCad per creare modelli fisici dai dati di scansione intraorale o da modelli di scansione tradizionali
ExoCad Module to recreate models from intra-oral scanning data or from models scan in traditional way



EXO-DV
EXOCAD DICOM VIEWER
Consente la visualizzazione durante un progetto delle informazioni volumetriche aggiunte ottenute da una TAC.
Dicom Viewer allows you to visualize voxel data from CT machines during the design of dental restorations



EXO-BITE
EXOCAD BITE MODULE
Con il modulo ExoCad i bite terapeutici e i bite saranno facilmente realizzabili e di alta precisione
With ExoCad's Bite Splint Module, therapeutic night guards can be designed quickly and in high quality



EXO-TS
EXOCAD TRU-SMILE
Tecnologia Tru-Smile che permette di visualizzare le ricostruzioni in maniera foto-realistica
Tru-Smile technology allows a realistic rendering of dental restorations



EXO-SC
EXOCAD PARTIAL FRAMEWORKS MODULE
Modulo per gli scheletrati
A digital solution for designing high-quality removable partial denture frameworks.



3D PRINTERS

Stampanti 3D con tecnologia DLP di alta precisione
High performance 3D Printer with DLP technology



11-3400

MOONRAY MODEL D 75 NEW

Tecnologia: UV Digital Light Processing SLA
Volume di stampa: 9,5 x 6 x 20 cm
Risoluzione: XY - 75 micron / Z - 20, 50 o 100 micron
Layer minimum: 0,002 mm | Velocità di stampa: 2,5 cm/h
Lunghezza d'onda luce: 405 nm
Technology: UV Digital Light Processing DLP
Printing volume: 9,5 x 6 x 20 cm
Resolution: XY - 75 micron / Z - 20, 50 o 100 micron
Layer minimum: 0,002 mm | Printing speed: 2,5 cm/h
Light wave length: 405 nm



11-3500

MOONRAY MODEL S 100 NEW

Tecnologia: UV Digital Light Processing SLA
Volume di stampa: 12 x 8 x 20 cm
Risoluzione: XY - 100 micron / Z - 20, 50 o 100 micron
Layer minimo: 0,002 mm | Velocità di stampa: 2,5 cm/h
Lunghezza d'onda luce: 405 nm
Technology: UV Digital Light Processing DLP
Printing volume: 12 x 8 x 20 cm
Resolution: XY - 100 micron / Z - 20, 50 o 100 micron
Layer minimum: 0,002 mm | Printing speed: 2,5 cm/h
Light wave length: 405 nm



11-3800

MOONWASH - CLEANER MACHINE NEW

Dimensioni vano di lavaggio: 145 x 145 x h 105
Sistema lavaggio: agitatore Contact-Less
Capienza Liquido: 2 L
Washing Chamber dimensions: 145 x 145 x h 105
Washing system: Contactless stirrer
Liquid capacity: 2 L



11-3900

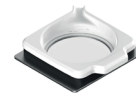
MOONLIGHT NEW

Fotopolimerizzatore ad alte prestazioni con luce 100% UV
Interfaccia touch screen
Dimensioni camera: 250 x 200 mm
Dimensioni esterne: 355 X 410 X 350 (H) mm
Luce: LED UV 405 e 310 nm
Photopolymerisator high performances with 100% UV light
with touch screen interface
Chamber dimensions: 250 x 200 mm
External dimensions: 355 X 410 X 350 (H) mm
Light: LED UV 405 and 310 nm



SR-RT RESIN TANK

Parte superiore del complesso serbatoio
Superior part of the tank



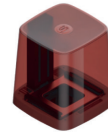
SR-RTA RESIN TANK ASSEMBLY

Kit serbatoio resina per MoonRay
Resin Tank for MoonRay



SR-BP BUILD PLATFORM

Piattaforma in alluminio per MoonRay
Anodized aluminium platform for MoonRay



SR-COV COVER RED

Coperchio in plexiglass rosso per coprire l'area di stampa
Red plexiglass cover to protect printing area



SR-TAB
TANK'S ALUMINIUM BASE
Base in alluminio per RESIN TANK ASSEMBLY
Aluminium base for RESIN TANK ASSEMBLY



SR-FEP TANK'S FEP

Pellicola trasparente di sostituzione
Transparent film (spare part)



3D PRINTERS LIQUID

Resine per stampa 3D DLP a 405 nm
3D printer DLP technology resins 405 nm



**NX-BC
CROWN & BRIDGE RESIN**
Resina per stampante 3D DLP 405 UV Materiale biocompatibile in Classe IIa Colore: A3,5 | Conf: 1000 ml
DLP 405 UV 3D printer resin Biocompatible Class IIa material Color: A3,5 | Pack: 1000 ml



**NX-CAST
CASTABLE RESIN**
Resina per stampante 3D DLP 405 UV
Colore: Porpora | Conf: 1000 ml
DLP 405 UV 3D printer resin Color: Dark red | Pack: 1000 ml



**NX-B
GENGIVAL RESIN**
Resina per stampante 3D DLP 405 UV Materiale biocompatibile in Classe IIa Colore: rosa | Conf: 1000 ml
DLP 405 UV 3D printer resin Biocompatible Class IIa material Color: Many pink tones | Pack: 1000 ml



**NX-M
MODEL RESIN**
Resina per stampante 3D DLP 405 UV
Colore: Ocra | Conf: 1000 ml
DLP 405 UV 3D printer resin Color: Ocher Pack: 1000 ml



**NX-MO
MODEL ORTHO RESIN**
Resina per stampante 3D DLP 405 UV
Colore: Beige | Conf: 1000 ml
DLP 405 UV 3D printer resin Color: Beige Pack: 1000 ml



**NX-OC
BITE RESIN**
Resina per stampante 3D DLP 405 UV Materiale biocompatibile in Classe IIa Colore: Trasparente | Conf: 1000 ml
DLP 405 UV 3D printer resin Biocompatible Class IIa material Color: Transparent | Pack: 1000 ml



**NX-MOR
ORTHO RIGID RESIN**
Resina per stampante 3D DLP 405 UV Materiale biocompatibile in Classe IIa Colore: Blu | Conf: 1000 ml
DLP 405 UV 3D printer resin Biocompatible Class IIa material Color: Blue | Pack: 1000 ml



**NX-SG
SURGICAL GUIDE RESIN**
Resina per stampante 3D DLP 405 UV
Colore: Arancio traslucente | Conf: 1000 ml
DLP 405 UV 3D printer resin Biocompatible Class IIa material Color: Orange translucent | Pack: 1000 ml



**NX-TRB - NX-TRP
TRAY RESIN**
Resina per stampante 3D DLP 405 UV
Colore: Blu & Rosa | Conf: 1000 ml
DLP 405 UV 3D printer resin Colors: Blue and Pink Pack: 1000 ml



**NX-GM
GUM RESIN**
Resina per stampante 3D DLP 405 UV
Colore: Rosa | Conf: 1000 ml **PUÒ ESSERE USATA IN COMBINAZIONE CON LA RESINA PER MODELLI**
DLP 405 UV 3D printer resin Color: Pink Pack: 1000 ml **CAN BE USED ALSO WITH MODEL RESIN**



**SR-DMO
MODEL RESIN**
Resina per stampante 3D DLP 405 UV
Colore: Arancio | Conf: 1000 ml
DLP 405 UV 3D printer resin Color: Orange | Pack: 1000 ml



**SR-DMG
MODEL RESIN**
Resina per stampante 3D DLP 405 UV
Colore: Verde | Conf: 1000 ml
DLP 405 UV 3D printer resin Color: Green | Pack: 1000 ml



**SR-CAST
CASTABLE RESIN**
Resina per stampante 3D DLP 405 UV
Colore: Giallo / Verde | Conf: 1000 ml
DLP 405 UV 3D printer resin Color: Yellow / Green | Pack: 1000 ml



**SR-DMBG
VERTYS MODEL RESIN**
Resina per stampante 3D DLP 405 UV per modelli
Colore: Beige | Conf: 500 ml
DLP 405 UV 3D printer resin for model Color: Beige | Pack: 500 ml



**SR-BCAST
BLUE CAST**
Resina calcinabile per stampante 3D DLP 405 UV
Colore: azzurro | Conf: 500 ml
DLP 405 UV 3D printer castable resin Color: light blue | Pack: 500 ml

MORE RESINS OUT SOON!!
Ask to your Dealer or E-mailing us at: info@vertysystem.com



SILICONES

Tutti i siliconi della linea Vertysystem
All Vertysystem silicones



200-2000

VERTYS ORANGE PLUS

Silicone di precisione Colore: arancio
Putty 64 Shore A | Conf: 300 ml A + 300 ml B
Precision silicone Color: orange
Putty 64 Shore A | Pack: 300 ml A + 300 ml B



200-2001

VERTYS EASY PUTTY 5

Silicone per riempimento e mascherine Colore: salmone
PUTTY 70 Shore A | Conf: 5Kg A + 5Kg B
Filling silicone Color: salmon
PUTTY 70 Shore A | Pack: 5Kg A + 5Kg B



200-2001.3

VERTYS EASY PUTTY 1,5

Silicone per riempimento e mascherine Colore: salmone
PUTTY 70 Shore A | Conf: 1,5Kg A + 1,5Kg B
Filling silicone Color: salmon
PUTTY 70 Shore A | Pack: 1,5Kg A + 1,5Kg B



200-2003

VERTYS EASY PUTTY 3

Silicone per riempimento e mascherine Colore: salmone
PUTTY 70 Shore A | Conf: 3Kg A + 3Kg B
Filling silicone Color: salmon
PUTTY 70 Shore A | Pack: 3Kg A + 3Kg B



200-2002

VERTYS PUTTY PRESS 5

Silicone per riempimento e mascherine Colore: ocre
PUTTY 90 Shore A | Conf: 5 Kg A + 5 Kg B
Filling silicone Color: ochre
PUTTY 90 Shore A | Pack: 5Kg A + 5Kg B



200-2002.3

VERTYS PUTTY PRESS 1,5

Silicone per riempimento e mascherine Colore: ocre
PUTTY 90 Shore A | Conf: 1,5Kg A + 1,5Kg B
Filling silicone Color: ochre
PUTTY 90 Shore A | Pack: 1,5Kg A + 1,5Kg B



200-2004

VERTYS PUTTY PRESS 3

Silicone per riempimento e mascherine Colore: ocre
PUTTY 90 Shore A | Conf: 3Kg A + 3Kg B
Filling silicone Color: ochre
PUTTY 90 Shore A | Pack: 3Kg A + 3Kg B



200-2012

VERTYS FLUID

Silicone da duplicazione
Colore: arancio | 25 Shore A Conf: 1 Kg A + 1 Kg B
Duplication silicone
Color: orange 25 Shore A | Pack: 1Kg A + 1Kg B



200-2005

VERTYS PRECISION

Silicone per correzione - Regular Colore: viola | 56 Shore A
Conf: 2 cartucce da 50 ml + 6 mixer
Correction Regular silicone Color: purple | 56 Shore A
Pack: 2 carteridge 50 ml + 6 mixer



200-2006

VERTYS WHITE PRESS

Silicone stampaggio ceramica Colore: bianco | 80 Shore A
Conf: 2 cartucce da 50 ml + 6 Mixer
Stamping ceramic silicone Color: white | 80 Shore A Pack:
2 carteridges 50 ml + 6 mixer



200-2007

VERTYS HEAVY GLASS 70

Silicone per compositi Colore: trasparente | 70 Shore A
Conf: 2 cartucce da 50 ml + 6 mixer
Silicone for composites Color: transparent 70 Shore A
Pack: 2 carteridges 50ml + 6 mixer



200-2010

VERTYS PINK

Silicone per gengive estetiche Colore: rosa | 70 Shore A
Conf: 2 cartucce da 50 ml + 6 mixer
Silicone for aesthetic gums Color: pink | 70 Shore A
Pack: 2 carteridges 50 ml + 6 mixer



200-2011

VERTYS SCAN PINK

Silicone per gengive estetiche scannerizzabile Colore: rosa
70 Shore A | Conf: 2 cartucce da 50 ml + 6 mixer
Scannable silicone for aesthetic gums Color: pink
70 Shore A | Pack: 2 carteridge 50ml + 6 mixer



200-2014

VERTYS HEAVY GLASS 70 TIXO

Silicone tissotropico per compositi Colore: trasparente
70 Shore A | Conf: 2 cartucce da 50 ml + 6 mixer
Tixotropic silicone for composites Color: transparent
72 Shore A | Pack: 2 carteridge 50 ml + 6 mixer



200-2008

VERTYS LIGHT GLASS 22

Silicone fluido per compositi fotopolimerizzabili
Colore: trasparente 22 Shore A | Conf: 1 Kg A + 1 Kg B
Fluid silicone for light curing composites Color: transparent
22 Shore A | Pack: 1 Kg A + 1 Kg B



200-2015

VERTYS MEDIUM GLASS 50

Silicone fluido per compositi fotopolimerizzabili Colore:
trasparente 50 Shore A | Conf: 500 g A + 500 g B
Fluid silicone for light curing composites Color: transparent
50 Shore A | Pack: 500 g A + 500 g B



SILICONES

Tutti i siliconi della linea Vertysystem
All Vertysystem silicones



200-4030
VERTYS RETARD
Ritardante liquido da applicare sui siliconi per addizione
Conf: 10 ml
Retard liquid for addition silicones
Pack: 10 ml



200-4032
VERTYS VELOX
Liquido per accelerare l'indurimento dei siliconi
Conf: 10 ml
Accelerator liquid for addition silicones
Pack: 10 ml



200-2020
HIGH SECURITY FLUID
Isolante siliconico fluido con elevata durezza finale
75 Shore A | Colore: azzurro | Conf: 250 g A + 250 g B
Insulator fluid silicone final hardness 75 Shore A
Color: light blue | Pack: 250 g A + 250 g B

INSULATORS



200-4000
VERTYS SILIKON LUBE
Isolante silicone-silicone spray, utile anche per la manutenzione delle muffole | Conf: 200 ml
Silicone to silicone isolant and also for the maintenance of flasks | Pack: Spray 200 ml



200-4002
VERTYS ORANGE SPECIAL LUBE^{NEW}
Isolante silicone-silicone spray specifico per Vertys Orange Plus | Conf: 200 ml
Silicone to silicone isolant specific for Vertys Orange Plus
Conf: Spray 200 ml



200-2490
VERTYS LUBE
Isolante alginico gesso-gesso
Conf: 500 ml
An alginate-based plaster-resin isolator
Pack: 500 ml



200-2715
VERTYS LATEX PINK
Lattice rosa per scarico sottosquadri
Conf: 15 ml
Pink latex to eliminate relines
Pack: 15 ml



RESINS

Tutte le resine della linea Vertysystem
All Vertysystem resins

■ Heat Curing ■ Cold Curing



200-2300
VERTYS TEMPLUS LIQUID COLD
Monomero per dentine e smalti a freddo
Conf: liquido 100 ml
Monomer for dentin and enamel
Pack: 100 ml liquid



200-2301
VERTYS TEMPLUS LIQUID COLD
Monomero per dentine e smalti a freddo
Conf: liquido 500 ml
Monomer for dentin and enamel
Pack: 500 ml liquid



200-2310
VERTYS TEMPLUS INTRO KIT
1 liquido (100 ml) 4 polveri dentine/monomasse a scelta (100g) 1 smalto (100g) 1 intensivo (8g) + 1 ergo-brush
1 liquid (100 ml) 4 powder dentin/monomassa to choose up to you (100g) 1 enamel (100g) 1 intensive (8g) + 1 ergo-brush



200-2311
VERTYS TEMPLUS D.A1
Dentina da provvisori caricata con microsfere in composito
Colore: D.A1 | Conf: polvere 100 g
Temporary resin charged with composite micro-pearls
Color: D.A1 | Pack: powder 100 g



200-2313
VERTYS TEMPLUS D.A2
Dentina da provvisori caricata con microsfere in composito
Colore: D.A2 | Conf: polvere 100 g
Temporary resin charged with composite micro-pearls
Color: D.A2 | Pack: powder 100 g



200-2314
VERTYS TEMPLUS D.A2
Dentina da provvisori caricata con microsfere in composito
Colore: D.A2 | Conf: polvere 500 g
Temporary resin charged with composite micro-pearls
Color: D.A2 | Pack: powder 500 g



200-2315
VERTYS TEMPLUS D.A3
Dentina da provvisori caricata con microsfere in composito
Colore: D.A3 | Conf: polvere 100 g
Temporary resin charged with composite micro-pearls
Color: D.A3 | Pack: powder 100 g



200-2316
VERTYS TEMPLUS D.A3
Dentina da provvisori caricata con microsfere in composito
Colore: D.A3 | Conf: polvere 500 g
Temporary resin charged with composite micro-pearls
Color: D.A3 | Pack: powder 500 g



200-2317
VERTYS TEMPLUS D.A3,5
Dentina da provvisori caricata con microsfere in composito
Colore: D.A3,5 | Conf: polvere 100 g
Temporary resin charged with composite micro-pearls
Color: D.A3,5 | Pack: powder 100 g



200-2318
VERTYS TEMPLUS D.A3,5
Dentina da provvisori caricata con microsfere in composito
Colore: D.A3,5 | Conf: polvere 500 g
Temporary resin charged with composite micro-pearls
Color: D.A3,5 | Pack: powder 500 g



200-2319
VERTYS TEMPLUS D.A4
Dentina da provvisori caricata con microsfere in composito
Colore: D.A4 | Conf: polvere 100 g
Temporary resin charged with composite micro-pearls
Color: D.A4 | Pack: powder 100 g



200-2321
VERTYS TEMPLUS D.B1
Dentina da provvisori caricata con microsfere in composito
Colore: D.B1 | Conf: polvere 100 g
Temporary resin charged with composite micro-pearls
Color: D.B1 | Pack: powder 100 g



200-2323
VERTYS TEMPLUS D.B2
Dentina da provvisori caricata con microsfere in composito
Colore: D.B2 | Conf: polvere 100g
Temporary resin charged with composite micro-pearls
Color: D.B2 | Pack: powder 100 g



200-2325
VERTYS TEMPLUS D.B3
Dentina da provvisori caricata con microsfere in composito
Colore: D.B3 | Conf: polvere 100g
Temporary resin charged with composite micro-pearls
Color: D.B3 | Pack: powder 100 g



200-2331
VERTYS TEMPLUS D.C2
Dentina da provvisori caricata con microsfere in composito
Colore: D.C2 | Conf: polvere 100g
Temporary resin charged with composite micro-pearls
Color: D.C2 | Pack: powder 100 g



200-2339
VERTYS TEMPLUS D.D3
Dentina da provvisori caricata con microsfere in composito
Colore: D.D3 | Conf: polvere 100g
Temporary resin charged with composite micro-pearls
Color: D.D3 | Pack: powder 100 g



RESINS

Tutte le resine della linea Vertysystem
All Vertysystem resins

■ Heat Curing ■ Cold Curing



200-2340
VERTYS TEMPLUS D.D3
Dentina da provvisori caricata con microsfere in composito
Colore: D.D3 | Conf: polvere 500 g
*Temporary resin charged with composite micro-pearls
Color: D.D3 | Pack: powder 500 g*



200-2349
VERTYS TEMPLUS BASIC LOW VALUE ENAMEL
Smalto base a valore basso | Conf: polvere 100 g
Temporary Basic Low Value enamel | Pack: powder 100 g



200-2351
VERTYS TEMPLUS BASIC ENAMEL
Smalto base | Conf: polvere 100 g
Temporary Basic enamel | Pack: powder 100 g



200-2353
VERTYS TEMPLUS WHITE ENAMEL
Smalto bianco | Conf: polvere 100 g
Temporary White enamel | Pack: powder 100 g



200-2355
VERTYS TEMPLUS INTENSIVE ENAMEL
Smalto intensivo | Conf: polvere 100 g
Temporary Intensive enamel | Pack: powder 100 g



200-2357
VERTYS TEMPLUS TRANSPARENT ENAMEL
Smalto trasparente | Conf: polvere 100 g
Temporary Transparent enamel | Pack: powder 100 g



200-2359
VERTYS TEMPLUS LIGHT BLUE ENAMEL
Smalto azzurro | Conf: polvere 100 g
Temporary light blue enamel | Pack: powder 100 g



200-2391
VERTYS TEMPLUS GLAZE
Glaze fotopolimerizzabile per lucidatura resina provvisori
Conf: liquido 10 ml
*Light curing glaze to polish temporary resins
Pack: 10 ml liquid*



200-2390
VERTYS TEMPLUS ARTIST KIT
Templus Kit che comprende / *Templus kit complete by:*
200-2451 VERTYS ARTIST WHITE | 8 g
200-2456 VERTYS ARTIST MUSTARD | 8 g
200-2457 VERTYS ARTIST BROWN | 8 g
200-2391 VERTYS TEMPLUS GLAZE | 10 ml

VERTYS MONOMASSA



200-2370
VERTYS TEMPLUS MONOMASSA INTRO KIT
MONOMASSA MM1 | Conf: 100 g
MONOMASSA MM2 | Conf: 100 g
MONOMASSA MM3 | Conf: 100 g
MONOMASSA MMG1 | Conf: 100 g



200-2371
VERTYS TEMPLUS MONOMASSA MM1
Miscela di dentine e smalti caricata con microsfere in composito riferimento: A1 | Conf: polvere 100 g
Mixture of dentin and enamel charged with composites micro-pearls Shade guide: A1 | Pack: powder 100 g



200-2372
VERTYS TEMPLUS MONOMASSA MM1
Miscela di dentine e smalti per provvisori con microsfere in composito Riferimento: A1 | Conf: polvere 500 g
Mixture of dentin and enamel charged with composites micro-pearls Shade guide: A1 | Pack: powder 500 g



200-2374
VERTYS TEMPLUS MONOMASSA MM2
Miscela di dentine e smalti caricata con microsfere in composito riferimento: A2/A3 | Conf: polvere 100 g
Mixture of dentin and enamel charged with composites micro-pearls Shade guide: A2/A3 | Pack: powder 100 g



200-2375
VERTYS TEMPLUS MONOMASSA MM2
Miscela di dentine e smalti per provvisori con microsfere in composito Riferimento: A2/A3 | Conf: polvere 500 g
Mixture of dentin and enamel charged with composites micro-pearls Shade guide: A2/A3 | Pack: powder 500 g



200-2377
VERTYS TEMPLUS MONOMASSA MM3
Miscela di dentine e smalti per provvisori con microsfere in composito Riferimento: A3,5/A4 | Conf: polvere 100 g
Mixture of dentin and enamel charged with composites micro-pearls Shade guide: A3,5/A4 | Pack: powder 100 g



RESINS


Tutte le resine della linea Vertysystem
All Vertysystem resins


VERTYS MONOMASSA

■ Heat Curing ■ Cold Curing

- 

200-2378
VERTYS TEMPLUS MONOMASSA MM3
Miscela di dentine e smalti per provvisori con microsfere in composito riferimento: A3,5/A4 | Conf: polvere 500 g
Mixture of dentin and enamel charged with composites micro-pearls Shade guide: A3,5/A4 | Pack: powder 500 g
- 

200-2383
VERTYS TEMPLUS MONOMASSA MMG1
Miscela di dentine e smalti caricata con microsfere in composito riferimento: D3 | Conf: polvere 100 g
Mixture of dentin and enamel charged with composites micro-pearls Shade guide: D3 | Pack: powder 100 g
- 

200-2384
VERTYS TEMPLUS MONOMASSA MMG1
Miscela di dentine e smalti per provvisori con microsfere in composito Riferimento: D3 | Conf: polvere 500 g
Mixture of dentin and enamel charged with composites micro-pearls Shade guide: D3 | Pack: powder 500 g
- 

200-2389
VERTYS TEMPLUS INTENSIVE ORANGE
Colore per intensificare Monomasse e dentine
Conf: polvere 8 g
Intensive color for Monomasse and dentin Pack: powder 8 g

FULL DENTURE

- 

200-2400
VERTYS PROTHESIS EXCEL
Monomero per resina termopolimerizzante a pressione
Conf: liquido 500 ml
Monomer for Cold-curing resin Pack: 500 ml liquid
- 

200-2401
VERTYS PROTHESIS EXCEL
Monomero per resina termopolimerizzante a pressione
Conf: liquido 1000 ml
Monomer for Cold-curing resin Pack: 1000 ml liquid
- 

200-2402
VERTYS PROTHESIS EXCEL
Monomero per resina termopolimerizzante a pressione
Conf: liquido 50 ml
Monomer for Cold-curing resin Pack: 50 ml liquid

- 

200-2403
VERTYS PROTHESIS EXCEL CLASSIC PINK VEINED
Resina termopolimerizzante a freddo caricata con microsfere in composito | Conf: polvere 1000 g
Cold curing resin for full denture charged with composites micro-pearls | Pack: 1000 g powder
- 

200-2404
VERTYS PROTHESIS EXCEL CLASSIC PINK VEINED
Resina termopolimerizzante a freddo caricata con microsfere in composito | Conf: polvere 100 g
Cold curing resin for full denture charged with composites micro-pearls | Pack: 100 g powder
- 

200-2405
VERTYS PROTHESIS EXCEL LIGHT PINK VEINED
Resina termopolimerizzante a freddo caricata con microsfere in composito | Conf: polvere 1000 g
Cold curing resin for full denture charged with composites micro-pearls | Pack: 1000 g powder
- 

200-2406
VERTYS PROTHESIS EXCEL LIGHT PINK VEINED
Resina termopolimerizzante a freddo caricata con microsfere in composito | Conf: polvere 100 g
Cold curing resin for full denture charged with composites micro-pearls | Pack: 100 g powder
- 

200-2407
VERTYS PROTHESIS EXCEL ORANGE PINK
Resina termopolimerizzante a freddo caricata con microsfere in composito | Conf: polvere 1000 g
Cold curing resin for full denture charged with composites micro-pearls | Pack: 1000 g powder
- 

200-2408
VERTYS PROTHESIS EXCEL ORANGE PINK
Resina termopolimerizzante a freddo caricata con microsfere in composito | Conf: polvere 100 g
Cold curing resin for full denture charged with composites micro-pearls | Pack: 100 g powder
- 

200-2409
VERTYS PROTHESIS EXCEL IMPLANT
Resina termopolimerizzante a freddo caricata con microsfere in composito | Conf: polvere 1000 g
Cold curing resin for full denture charged with composites micro-pearls | Pack: 1000 g powder
- 

200-2410
VERTYS PROTHESIS EXCEL IMPLANT
Resina termopolimerizzante a freddo caricata con microsfere in composito | Conf: polvere 100 g
Cold curing resin for full denture charged with composites micro-pearls | Pack: 100 g powder



RESINS

Tutte le resine della linea Vertysystem
All Vertysystem resins

■ Heat Curing ■ Cold Curing

	<p>200-2413 VERTYS PROTHESIS EXCEL CLASSIC PINK Resina termopolimerizzante a freddo caricata con microsfere in composito Conf: polvere 1000 g <i>Cold curing resin for full denture charged with composites micro-pearls Pack: 1000 g powder</i></p>
	<p>200-2414 VERTYS PROTHESIS EXCEL CLASSIC PINK Resina termopolimerizzante a freddo caricata con microsfere in composito Conf: polvere 1000 g <i>Cold curing resin for full denture charged with composites micro-pearls Pack: 1000 g powder</i></p>
	<p>200-2420 VERTYS PROTHESIS PLUS LIQUID Monomero per resina termopolimerizzante a freddo Conf: liquido 500 ml <i>Monomer for Cold-curing resin Pack: 500 ml liquid</i></p>
	<p>200-2423 VERTYS PROTHESIS PLUS CLASSIC PINK VEINED Resina termopolimerizzante a freddo per protesi mobile Conf: polvere 1000 g <i>Cold curing resin for full denture Pack: 1000 g powder</i></p>
	<p>200-2470 VERTYS PROTHESIS HOT LIQUID Monomero per resina termopolimerizzante a caldo Conf: liquido 500 ml <i>Monomer for hot-curing resin Pack: 500 ml liquid</i></p>
	<p>200-2471 VERTYS PROTHESIS HOT LIQUID Monomero per resina termopolimerizzante a caldo Conf: liquido 1000 ml <i>Monomer for hot-curing resin Pack: 1000 ml liquid</i></p>
	<p>200-2473 VERTYS PROTHESIS HOT CLASSIC PINK VEINED Resina termopolimerizzante a caldo caricata con microsfere in composito Conf: polvere 1000 g <i>Hot curing resin for full denture charged with composites micro-pearls Pack: 1000 g powder</i></p>
	<p>200-2475 VERTYS PROTHESIS HOT LIGHT PINK VEINED Resina termopolimerizzante a caldo caricata con microsfere in composito Conf: polvere 1000 g <i>Hot curing resin for full denture charged with composites micro-pearls Pack: 1000 g powder</i></p>

	<p>200-2476 VERTYS PROTHESIS HOT ORANGE PINK Resina termopolimerizzante a caldo caricata con microsfere in composito Conf: polvere 1000 g <i>Hot curing resin for full denture charged with composites micro-pearls Pack: 1000 g powder</i></p>
	<p>200-2477 VERTYS PROTHESIS HOT CLASSIC PINK Resina termopolimerizzante a caldo caricata con microsfere in composito Conf: polvere 1000 g <i>Hot curing resin for full denture charged with composites micro-pearls Pack: 1000 g powder</i></p>
	<p>200-2476 VERTYS PROTHESIS HOT ORANGE PINK Resina termopolimerizzante a caldo caricata con microsfere in composito Conf: polvere 1000 g <i>Hot curing resin for full denture charged with composites micro-pearls Pack: 1000 g powder</i></p>
	<p>200-2477 VERTYS PROTHESIS HOT CLASSIC PINK Resina termopolimerizzante a caldo caricata con microsfere in composito Conf: polvere 1000 g <i>Hot curing resin for full denture charged with composites micro-pearls Pack: 1000 g powder</i></p>
	<p>200-24779 VERTYS PROTHESIS HOT OPAK PINK Resina termopolimerizzante a caldo caricata con microsfere in composito Conf: polvere 1000 g <i>Hot curing resin for full denture charged with composites micro-pearls Pack: 1000 g powder</i></p>
	<p>200-2480 VERTYS FIBER RED Fibrille rosse Conf: 1,3 g <i>Red fiber Pack: 1,3 g</i></p>



RESINS

TRAY RESIN



200-2520
VERTYS TRAY PINK LIQUID
 Monomero per resina da cucchiari
 Conf: liquido 500 ml
Liquid for trays resin | Pack: 500 ml liquid



200-2525
VERTYS TRAY PINK POWDER
 Resina autopolimerizzante per cucchiari
 Colore rosa | Conf: polvere 500 g
Resin for trays | Pack: 500 g powder

CHARACTERISATION RESINS



200-2450
VERTYS ARTIST KIT
 Kit di 8 colori complessivi per la caratterizzazione | Conf: 8 polveri da 8 g
Kit composed by 8 colors for the characterization
 Pack: 8 Powders 8 g powders



200-2451
VERTYS ARTIST WHITE
 Colore intensivo di colore bianco per la caratterizzazione
 Colore: bianco | Conf: polvere 8 g
Intensive color for the characterization
 Color: white | Pack: 8 g powder



200-2452
VERTYS ARTIST PINK
 Colore intensivo di colore bianco per la caratterizzazione
 Colore: rosa | Conf: polvere 8 g
Intensive color for the characterization
 Shade: pink | Pack: 8 g powder



200-2453
VERTYS ARTIST DARK PINK
 Colore intensivo di colore bianco per la caratterizzazione
 Colore: rosa scuro | Conf: polvere 8 g
Intensive color for the characterization
 Shade: dark pink | Pack: 8 g powder



200-2454
VERTYS ARTIST RED
 Colore intensivo di colore bianco per la caratterizzazione
 Colore: rosso | Conf: polvere 8 g
Intensive color for the characterization
 Shade: red | Pack: 8 g powder

Tutte le resine della linea Vertysystem
All Vertysystem resins



200-2455
VERTYS ARTIST VIOLET
 Colore intensivo di colore bianco per la caratterizzazione
 Colore: viola | Conf: polvere 8 g
Intensive color for the characterization
 Shade: violet | Pack: 8 g powder



200-2456
VERTYS ARTIST MUSTARD
 Colore intensivo di colore bianco per la caratterizzazione
 Colore: mostarda | Conf: polvere 8 g
Intensive color for the characterization
 Shade: mustard | Pack: 8 g powder



200-2457
VERTYS ARTIST BROWN
 Colore intensivo di colore bianco per la caratterizzazione
 Colore: marrone | Conf: polvere 8 g
Intensive color for the characterization
 Shade: brown | Pack: 8 g powder



200-2458
VERTYS ARTIST DARK BLUE
 Colore intensivo di colore bianco per la caratterizzazione
 Colore: blu scuro | Conf: polvere 8 g
Intensive color for the characterization
 Shade: blu scuro | Pack: 8 g powder



200-2460
VERTYS MODEL LIQUID
 Liquido per modellare resine e marker
 Conf: liquido 100 ml
Liquid to model resins and marker
 Pack: 100 ml liquid



200-2462
VERTYS CHARACTER LIGHT PINK
 Resina per caratterizzazione
 Colore: rosa chiaro | Conf: 100 g
Characterization resin
 Color: light pink | Pack: 100 g powder



200-2464
VERTYS CHARACTER DARK PINK
 Resina per caratterizzazione
 Colore: rosa scuro | Conf: 100 g
Characterization resin
 Color: dark pink | Pack: 100 g powder



200-2468
VERTYS ACRYL BOND
 Liquido per adesione denti acrilici
 Conf: liquido 30 ml
Liquid to bond between acrylic
 Pack: 30 ml liquid



RESINS



200-2440
VERTYS SURGICAL LIQUID
 Monomero per Bite, Dime Chirurgiche e Ortodonzia
 Conf: liquido 500 ml
Monomer for Bite, Dima and Orthodontics
 Pack: 500 ml liquid



200-2441
VERTYS SURGICAL LIQUID
 Monomero per Bite, Dime Chirurgiche e Ortodonzia
 Conf: liquido 1000 ml
Monomer for Bite, Dima and Orthodontics
 Pack: 1000 ml liquid



200-2443
VERTYS SURGICAL
 Resina trasparente per Bite, Dime Chirurgiche e Ortodonzia
 Conf: polvere 1000 g
Transparent resin for Bite Orthodontics and Dima
 Pack: 1000 g powder



200-2445
VERTYS BARIUM LIQUID
 Monomero per resine radio-opache
 Conf: liquido 250 ml
Monomer for radio-opaque resin
 Pack: 250 ml liquid



200-2447
VERTYS BARIUM 1
 Resina radiopaca per Dime Chirurgiche
 Contiene il 27% di bario | Conf: polvere 500 g
Radiopaque resin for Surgical Dima with 27% of barium-
 Pack: 500 g powder



200-2449
VERTYS BARIUM 2
 Resina radiopaca per Dime Chirurgiche
 Contiene il 13% di bario | Conf: polvere 500 g
Radiopaque resin for Surgical Dima with 13% of barium
 Pack: 500 g powder

Tutte le resine della linea Vertysystem
All Vertysystem resins

OPAK



200-2700
VERTYS OPAK PINK KIT
 Opaco fotopolimerizzabile per leghe vili
 Conf: polvere 10 g rosa + liquido 10 ml
Kit to opak non precious metal alloys
 Pack: Pink Powder 10 g + Liquid 10 ml



200-2701
VERTYS OPAK PINK
 Opaco fotopolimerizzabile per leghe vili
 Colore: rosa | Conf: polvere 10 g
Powder to opak non precious metal alloys
 Color: Pink | Pack: 10 g powder



200-2705
VERTYS OPAK DENTIN KIT
 Opaco fotopolimerizzabile per leghe vili
 Conf: polvere 10 g dentinale + liquido 10 ml
Kit to opak non precious metal alloys
 Pack: Dentin Powder 10 g + Liquid 10 ml



200-2706
VERTYS OPAK DENTIN
 Opaco fotopolimerizzabile per leghe vili
 Colore: dentina | Conf: polvere 10 g
Powder to opak non precious metal alloys
 Color: Dentin | Pack: 10 g powder



200-2709
VERTYS OPAK LIQUIDO
 Liquido per resina da opachi fotopolimerizzabili
 Conf: liquido 10 ml
Liquid for light curing opak resins
 Pack: 10 ml liquid

SPECIAL SPRAY FOR FULL DENTURE RESIN



A-4002
MINT^{NEW}
 Spray per protesi mobile al retrogusto di menta. Riduce il residuo monomero e rende la superficie della protesi più lucida. Clinicamente testato | Conf: 75 ml spray
Full Denture spray with a mint taste. It reduces monomer residual and give a shiny layer to the denture surface.
 Dermatologically tested | Pack: 75 ml spray



RESINS

CASTABLE RESIN



200-2511

RED FIRE GEL

Gel in siringa calcinabile fotopolimerizzabile Colore: rosso
 Conf: 3 siringhe da 3 g + 12 puntali
Light-cured burn-out resin Gel Color: red
 Pack: 3 syringe 3 g + 12 needles



200-2512

RED FIRE GEL | ECO PACK

Gel in siringa calcinabile fotopolimerizzabile Colore: rosso
 Conf: 6 siringhe da 3 g + 24 puntali
Light-cured burn-out resin Gel Color: red
 Pack: 6 syringe 3 g + 24 needles



200-2514

RED FIRE PASTE

Resina calcinabile fotopolimerizzabile in pasta Colore rosso
 Conf: vasetto 30 g
Light-cured burn-out resin Paste | Color: red
 Pack: Tub 30 g

VERTYS SYRINGES



200-2600

VERTYS SIRINGHE MONO

Siringhe monouso per iniezione resine acriliche
 Conf: 5 pz da 10 ml + 5 pz da 30 ml
Single-use syringe to inject acrylic resins
 Pack: 5 pcs x 10 ml + 5 pcs x 30 ml



200-2603

VERTYS SIRINGHE MONO

Siringhe monouso per iniezione resine acriliche
 Conf: 20 pz da 10 ml
Single-use syringe to inject acrylic resins
 Pack: 20 pcs x 10 ml



200-2605

VERTYS SIRINGHE + HANDLE

Siringhe monouso per iniezione resine acriliche + impugnatura | Conf: 10 pz da 30 ml + Handle in tecnopolimero
Single-use syringe to inject acrylic resins
 Pack: 10 pcs x 30 ml + technopolymer Handle



200-2606

VERTYS SIRINGHE MONO

Siringhe monouso per iniezione resine acriliche
 Conf: 10 pz da 30 ml
Single-use syringe to inject acrylic resins
 Pack: 10 pcs x 30 ml

POLYURETHANE RESIN



101-0720

GENIUS PASTEL 720

Resina poliuretanic scannerizzabile a due componenti
 Colore: pastello | Conf: Comp. A 600 g + Comp. B 120 g
Polyurethane resin for pouring stone model Color: pastel
 Pack: Comp. A 600 g + Comp. B 120 g



101-1200

GENIUS PASTEL 1200

Resina poliuretanic scannerizzabile a due componenti
 Colore: pastello | Conf: Comp. A 1000 g + Comp. B 200 g
Polyurethane resin for pouring stone model Color: pastel
 Pack: Comp. A 1000 g + Comp. B 200 g



102-0720

GENIUS GOLD 720

Resina poliuretanic scannerizzabile a due componenti
 Colore: sabbia | Conf: Comp. A 600 g + Comp. B 120 g
Polyurethane resin for pouring stone model Color: sand
 Pack: Comp. A 600 g + Comp. B 120 g



102-1200

GENIUS GOLD 1200

Resina poliuretanic scannerizzabile a due componenti
 Colore: sabbia | Conf: Comp. A 1000 g + Comp. B 200 g
Polyurethane resin for pouring stone model Color: sand
 Pack: Comp. A 1000 g + Comp. B 200 g



103-0720

GENIUS GREY 720

Resina poliuretanic scannerizzabile a due componenti
 Colore: grigio | Conf: Comp. A 600 g + Comp. B 120 g
Polyurethane resin for pouring stone model Color: grey
 Pack: Comp. A 600 g + Comp. B 120 g



103-1200

GENIUS GREY 1200

Resina poliuretanic scannerizzabile a due componenti
 Colore: grigio | Conf: Comp. A 1000 g + Comp. B 200 g
Polyurethane resin for pouring stone model Color: grey
 Pack: Comp. A 1000 g + Comp. B 200 g



104-0720

GENIUS WHITE 720^{NEW}

Resina poliuretanic scannerizzabile a due componenti
 Colore: bianco | Conf: Comp. A 600 g + Comp. B 120 g
Polyurethane resin for pouring stone model Color: white
 Pack: Comp. A 600 g + Comp. B 120 g



104-1200

GENIUS WHITE 1200^{NEW}

Resina poliuretanic scannerizzabile a due componenti
 Colore: bianco | Conf: Comp. A 1000 g + Comp. B 200 g
Polyurethane resin for pouring stone model Color: white
 Pack: Comp. A 1200 g + Comp. B 200 g



WAXES

Tutte le nostre cere da protesi mobile
All our full denture waxes



200-5001
LASAGNA
Cera in fogli per modellazione flange Colore: rosa
Conf: 500g
Layer wax ideal to modelling Color: pink
Pack: 500g



200-5002
TIMBALLO
Cera modellazione flange in coni Colore: rosa
Pack: 6pz 360g
Conical wax ideal to characterize Color: pink
Pack: 6 pcs 360g



200-5003
TIMBALLINO
Cera per caratterizzare in coni
Conf: 2 pz (1 rosa + 1 rosso) 80g
Conical wax ideal to characterize
Pack: 2 pcs (1 pink + 1 red) 80g



200-5004
TIMBALLINO PINK
Cera per caratterizzare in coni Colore: rosa
Conf: 1 pz 40g
Conical wax ideal to characterize Color: pink
Pack: 1pc 40g



200-5005
TIMBALLINO RED
Cera per caratterizzare in coni Colore: rosso
Conf: 1 pz 40g
Conical wax ideal to characterize Color: red
Pack: 1 pc 40g



200-5006
CIOCCOLATTE
Cera in tavolette per modellazione flange Colore: rosa
Conf: 375g
Tab wax ideal to modelling Color: pink
Pack: 375g



200-5007
GRISSINO
Cera da montaggio in bastoncini in file Colore: rosa
Conf: 250g
Stick wax Color: pink
Pack: 250g



200-5008
BISCOTTO S
Valli occlusali in cera per inferiori Colore: beige
Conf: 36pz 350g
Wax moulds for upper occlusal Color: beige
Pack: 36 pcs 350 g



200-5009
BISCOTTO I
Valli occlusali in cera per inferiori Colore: beige
Conf: 36pz 350g
Wax moulds for lower occlusal Color: beige
Pack: 36 pcs 350 g



200-5010
WAX PACK SMALL
Kit introduttivo di cere da protesi mobile composto da:
Introductory full denture waxes Kit composed by:
LASAGNA (50g) + TIMBALLO 60g + GRISSINO 4g +
BISCOTTO S (12g) + BISCOTTO I (9g)



200-5012
WAX PACK BIG
Introductory full denture waxes Kit composed by:
LASAGNA (50g) + TIMBALLO (60g) + TIMBALLINO (80g)
+ CIOCCOLATTE (30g) + GRISSINO (4g) + BISCOTTO S
(12g) + BISCOTTO I (9g)

BIOGLASS NET FIBER FOR FULL DENTURE



200-5600
PALA FIBER KIT
Rete di rinforzo in fibra di quarzo per protesi mobile
Conf: 1 rete da 45 x 45 mm + 1 rete da 55 x 55 mm
Bioglass reinforcement fiber net for Full dentures
Pack: 1 net 45x45 mm + 1 net 55x55 mm



200-5610
PALA FIBER 45 X 45
Rete di rinforzo in fibra di quarzo per protesi mobile
Conf: 2 reti da 45 x 45 mm
Bioglass reinforcement fiber net for Full dentures
Pack: 2 nets 45x45 mm



200-5620
PALA FIBER 55 X 55
Rete di rinforzo in fibra di quarzo per protesi mobile
Conf: 2 reti da 55 x 55 mm
Bioglass reinforcement fiber net for Full dentures
Pack: 2 nets 55x55 mm



VERTYS LINE

Una linea di prodotti che colora i tuoi ambienti
A product line that color your spaces



10-0008

HELP

Strumento in tecnopolimero per la pulizia di: denti acrilici, viti, impianti frese ecc.
Technopolymer instrument to wash: acrylic teeth, vines, burs etc.



10-2560

FURBO SHOW

Base per l'alloggio di siringa, aste e distanziali compreso di 10-1040 Vertys Handle e siringa da 30 ml
Support base with 4 axis to organize spacers and axis with 10-1040 Vertys Handle and 30 ml syringe



200-2840

PICK TAKE

Strumento per il prelievo di denti acrilici, frese, impianti e simili. Utile anche per caratterizzare i denti
Ideal nipper to easily take off the acrylic teeth and facings from Help. Useful also for the characterization of the teeth



200-2850

MIXING KIT

Ciotola e Spatola per impasto delle resine acriliche
Colored gum cup and spatula to mix resin and gypsum



200-2852

MIXING CUP

Ciotola per impasto delle resine acriliche
Colored gum cup to mix resin and gypsum



200-2854

MIXING SPATULA

Spatola colorata per impasto delle resine e del gesso
Colored spatula to mix resin and gypsum



200-3000

ERGO-BRUSH by Wilky Bunyan

Set di pennelli di differenti misure con puntale in martora-Kolinsky | Conf: 6 manici + 6 pennelli (N° 00, 0, 2, 4, 5, 6)
Technopolymer different measures brushes. Tip martena Kolinsky | Pack: 6 handle + 6 brushes (N° 00, 0, 2, 4, 5, 6)



200-3004

ERGO BRUSH STATION PLEXI

Base di supporto in plexiglass per alloggio pennelli
Support plexiglass base to set brushes



200-3009

ERGO-BRUSH by Wilky Bunyan Red

Manico rosso completo di pennello N° 00
Red handle complete by brush N° 00



200-3010

ERGO-BRUSH by Wilky Bunyan Orange

Manico arancione completo di pennello N° 0
Orange handle complete by brush N° 0



200-3012

ERGO-BRUSH by Wilky Bunyan Yellow

Manico giallo completo di pennello N° 000 o 2
Yellow handle complete by brush N° 000 and 2



200-3014

ERGO-BRUSH by Wilky Bunyan Green

Manico verde completo di pennello N° 4
Green handle complete by brush N° 4



200-3015

ERGO-BRUSH by Wilky Bunyan Blue

Manico blu completo di pennello N° 5
Blue handle complete by brush N° 5



200-3016

ERGO-BRUSH by Wilky Bunyan Violet

Manico viola completo di pennello N° 6
Violet handle complete by brush N° 6

Who we are



Ermes Brunato
Chief Executive Officer



Stefano Stefani
Marketing Manager



Davide Stefani
Sales Manager



Maria Grazia Marzullo
Finance and Administration



Elena Saccardo
Chief Financial Officer



Alison Franco de Oliveira
Junior Export Manager



Emmanuel Tanikie
Warehouse and Shipment

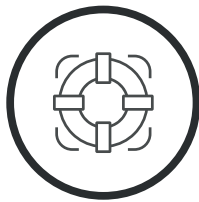


Francesco Santagati
Digital Expert



Nicola Marte
Equipment Expert

Our Surplus



Assistenza tecnica
Technical assistance



Materiale informativo
Information Sheets



Corsi di formazione
Training courses



Consulenza in remoto
Remote counselling



Aggiornamenti continui
Continuous updates



Contatto diretto
Direct relationship

Vertys Quality Labor



Loredana Adriano
Piemonte (ITA)



Javier Alesanco
La Rioja (ESP)



Laboratorio Artitec
Lombardia (ITA)



Luciano Boggia
Liguria (ITA)



Maurizio Di Simone
Campania (ITA)



Daniele Distefano
Sicilia (ITA)



Massimo Fabbro
Piemonte (ITA)



Gaetano Gammella
Campania (ITA)



Stefano Mazzarella
Emilia Romagna (ITA)



Nacho Albertos Meri
Valencia (ESP)



Massimo Mollo
Calabria (ITA)



Victor Cedrà
Alicante (ESP)



Una squadra di colleghi di decennale esperienza a tua disposizione.
A team of experienced dental technicians at your sight ready to help you.



Luca Carneri
Veneto (ITA)



Massimo De Maio
Toscana (ITA)



Antonio Del Pin
Friuli Venezia Giulia (ITA)



Wilki Bunjan
Bristol (UK)



Sandro Iannotti
Abruzzo (ITA)



Raffaele Iantosca
Campania (ITA)



Fabio Martinuzzi
Piemonte (ITA)



Marco Masoni
Toscana (ITA)



Raffaele Sica
Campania (ITA)



Francesco Sottolano
Lazio (ITA)



Amilcare G. Travosi
Puglia (ITA)



Corrado Vivarelli
Toscana (ITA)

VISIT:
www.vertysystem.com/vertys-quality-labor

