

Dura-White



Vitrified-bonded alumina stones

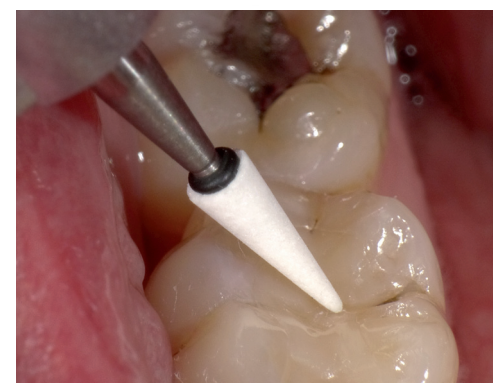
For finishing of enamel, glass ionomer cements, composites, porcelain and prepared tooth abutment, none exceeds the performance of Dura-White stones. Made of micrograined alumina grits, each "Arkansas" stone is perfectly balanced and suited for very fine finishing and smoothing of various dental materials.



Shape	CN1	CY2	FL1	FL2	FL3	IC4	KN1	RD1	RD2	RE1	TC1	TC4
ISO No.	024	025	030	025	030	045	050	030	024	062	020	040
HP	0201		0202	0203	0204	0205		0207	0208	0209	0210	0211
CA	0221		0222	0223	0224			0227	0228	0229	0230	
FG	0241	0243	0240	0244			0246	0247	0248		0249	



Shape	WH1	WH4
ISO No.	040	060
HP		0212
CA		
FG	0250	



BENEFITS

- Precise concentricity
- Low vibration grinding
- Consistent finishing performance
- Economical
- High edge stability
- Long-lasting service life
- Wide range of shapes

Indications

■ CHAIRSIDE

Finishing and very fine working of e. g. composite or glass ionomer filling materials, porcelain, tooth enamel, e. g. smoothing crown preparations after contouring with diamond abrasives

■ IN THE DENTAL LABORATORY

Very fine contouring and fine finishing of porcelain or composite restorations

Range of Application

Suitable for the following materials:
porcelain, composite, compomer, dental hard tissue, glass ionomer cement

PN	Quantity	Product
0201-0250	12 pcs.	Dura-White stones, HP, CA, FG shank



Min⁻¹ Recom. 5,000-20,000 / Max. 30,000 / CP 2 N